

0 5 10 m




Monk Sherborne Solar Farm Limited

Trial Trench Evaluation

Figure 9
Trenches 29, 30 and 31.



Key

- Site boundary 
- Trench 
- Features 

0 5 10 m

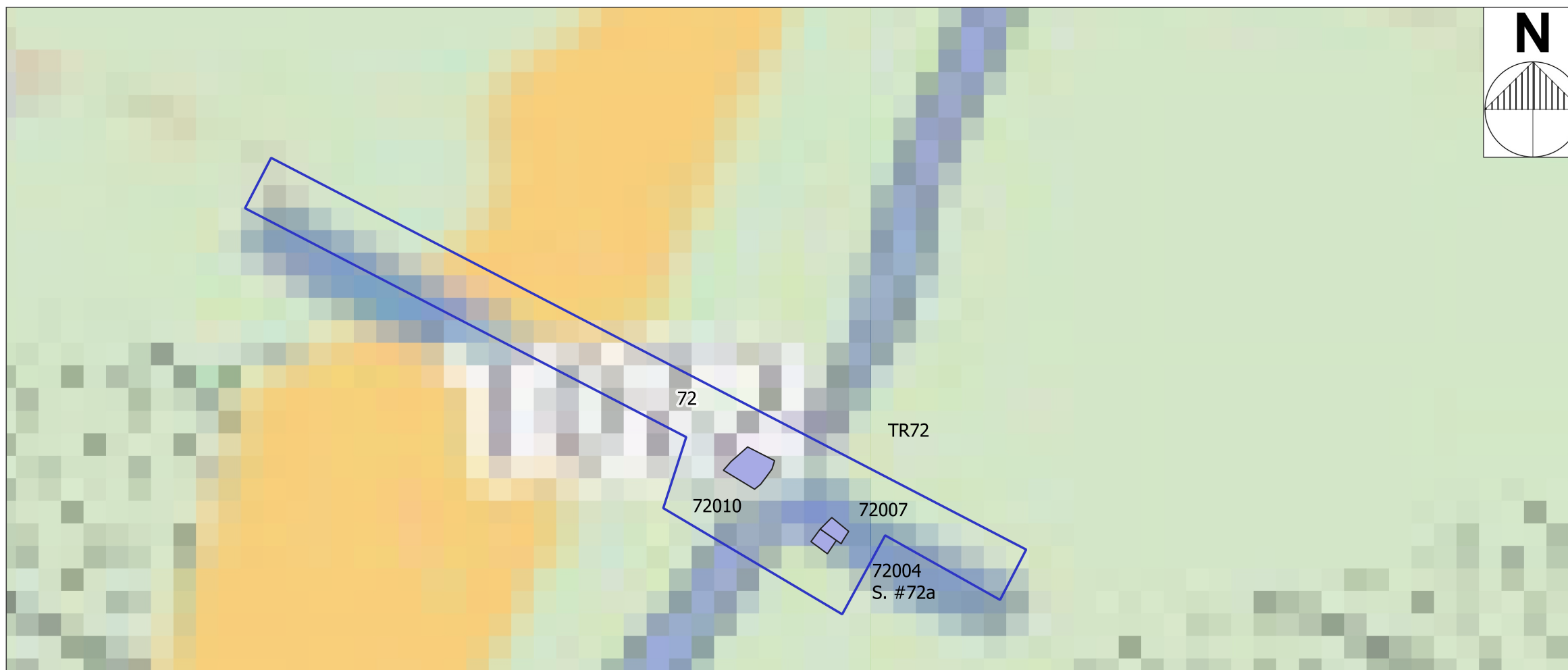
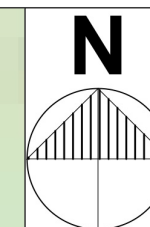
Monk Sherborne Solar Farm Limited

Trial Trench Evaluation

Figure 10
Trenches 35 and 36

Key

- Trench 
- Features 

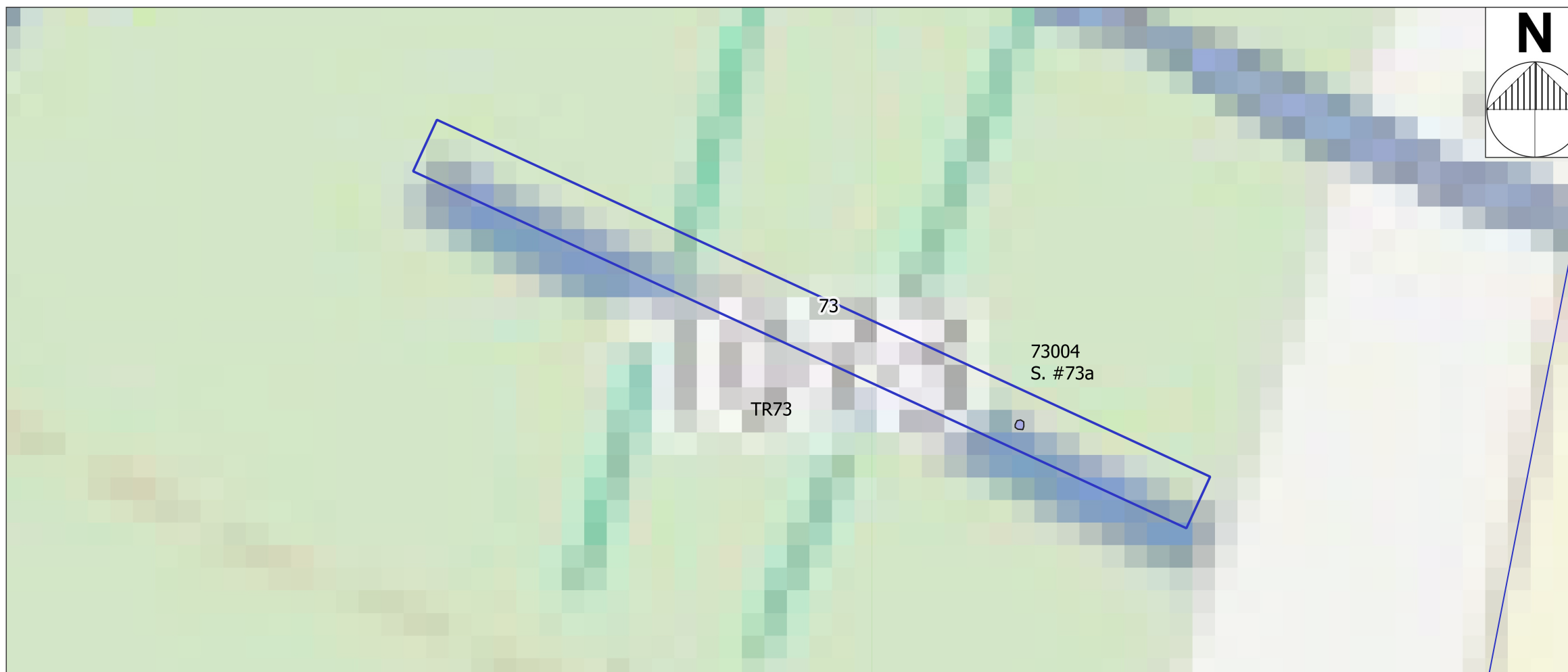


0 5 10 m

Monk Sherborne Solar Farm Limited

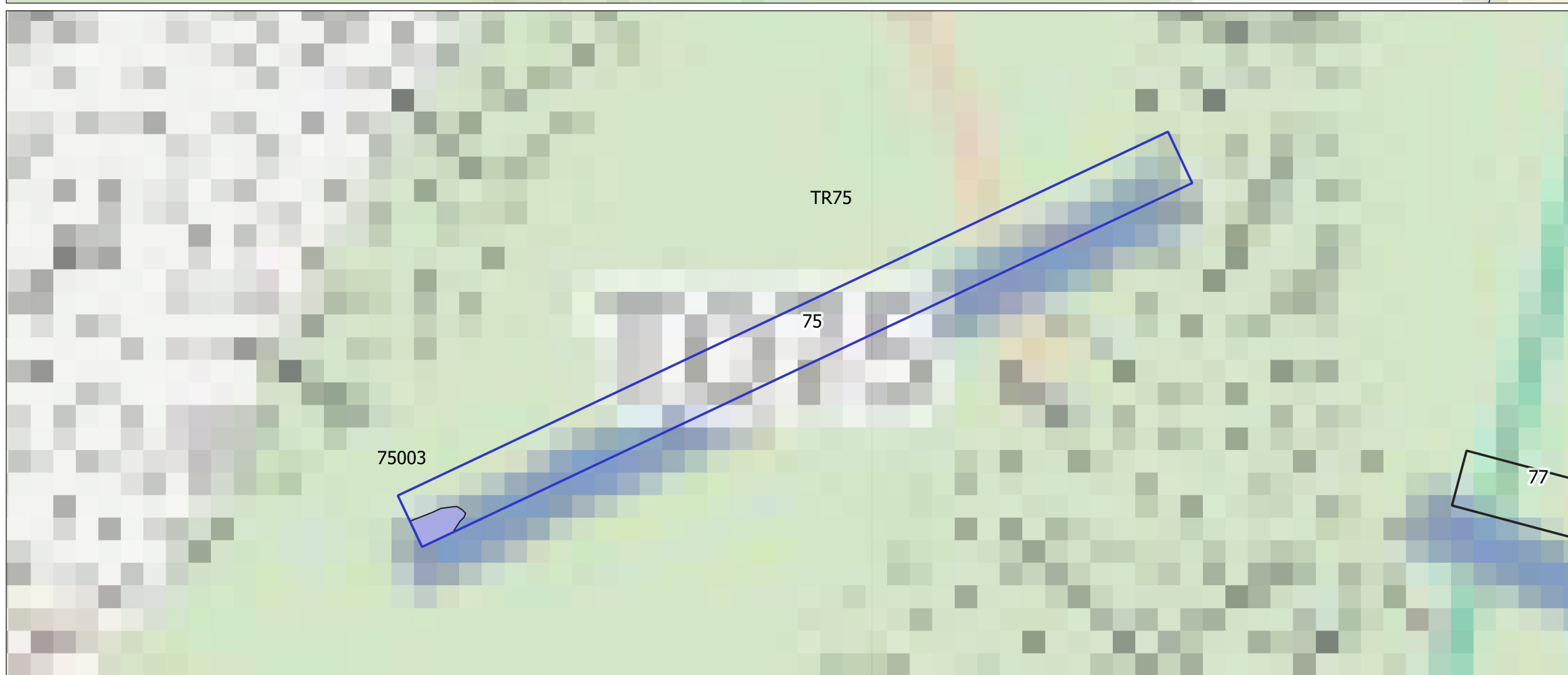
Trial Trench Evaluation

Figure 11
Trenches 72 and 82



Key

- Trench 
- Features 

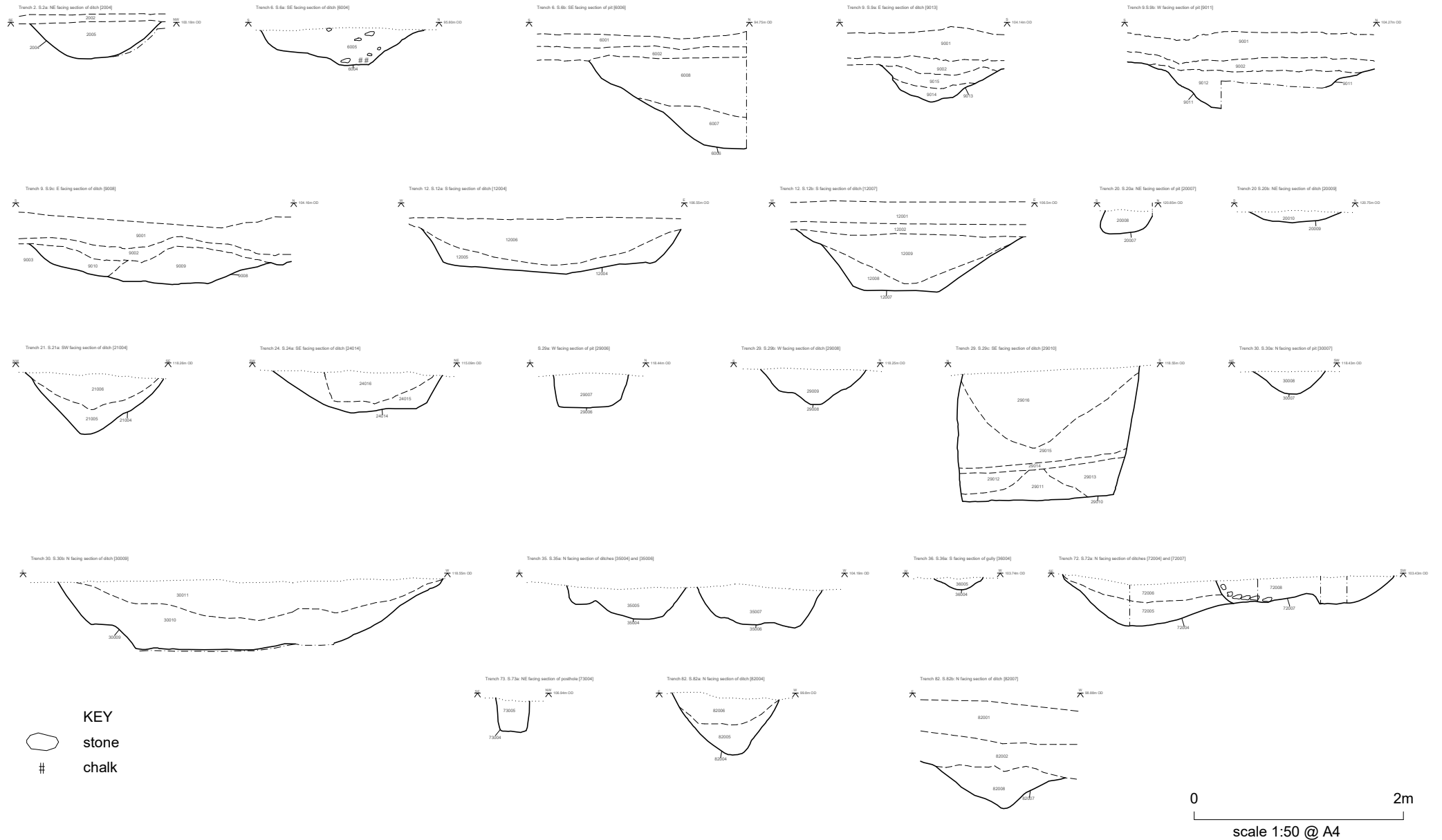


0 5 10 m

Monk Sherborne Solar Farm Limited

Trial Trench Evaluation

Figure 12
Trenches 73 and 75



Appendix A: Trench descriptions

Trench 1					
General description				Orientation	N-S
Blank				Length (m)	30m
				Width (m)	1.8m
				Max. Depth	0.5m
				Min Depth	0.4m
Context No.	Type	Depth	Description	Finds	Date
1001	Topsoil	0.3m	Dark brown loose silt organic	-	13/12/24
1002	Subsoil	0.1m	Mid brown orange, friable, clayey silt	-	13/12/24
1003	Natural	-	White chalk	-	13/12/24

Trench 2					
General description			Orientation	W-E	
Three possible pits/ post holes Three possible ditches			Length (m)	30m	
			Width (m)	1.8m	
			Max. Depth	0.5m	
			Min Depth	0.4m	
Context No.	Type	Depth	Description	Finds	Date
2001	Topsoil	0.3m	Dark brown loose silt organic		13/12/24
2002	Subsoil	0.1m	Mid brown orange, friable, clayey silt		13/12/24
2003	Natural		White chalk		13/12/24
2004	Cut of linear	L: 1m+ W: 1.26m D: 0.35m	Linear aligned NE-SW. Curved sides with a flat base.		19/12/25
2005	Fill of [2004]	0.35m	Soft greyish brown silty clay with frequent inclusions of moderately sized chalk and flint		19/12/25
2006	Cut of pit	L: 0.74m W: 0.38m D: 0.27m	Straight, vertical sides with a flat base		19/12/25
2007	Fill of [2006]	0.27m	Soft, greyish brown silty clay with moderate inclusions of small flint and chalk		13/12/24

Trench 3					
General description				Orientation	E-W
Possible large pit caught in eastern end of trench.				Length (m)	30m
				Width (m)	1.8m
				Max. Depth	0.5m
				Min Depth	0.4m
Context No.	Type	Depth	Description	Finds	Date
3001	Topsoil	0.3	Dark brown loose silt organic		13/12/24
3002	Subsoil	0.2	Mid brown orange, friable/firm, clayey silt		13/12/24
3003	Natural		White chalk		13/12/24

Trench 4					
General description				Orientation	NE-SW
Possible intersecting ditches or irregular pits				Length (m)	30m
				Width (m)	1.8m
				Max. Depth	0.5m
				Min Depth	0.4m
Context No.	Type	Depth	Description	Finds	Date
4001	Topsoil	0.3m	Dark brown loose silt organic		13/12/24
4002	Subsoil	0.1m	Mid brown orange, friable, clayey silt		13/12/24
4003	Natural		White chalk		13/12/24

Trench 5					
General description				Orientation	NE-SW
Possible small pit at north eastern end				Length (m)	30m
				Width (m)	1.8m
				Max. Depth	0.5m
				Min Depth	0.4m
Context No.	Type	Depth	Description	Finds	Date
5001	Topsoil	0.3m	Dark brown loose silt organic		13/12/24
5002	Subsoil	0.1m	Mid brown orange, friable, clayey silt		13/12/24
5003	Natural		White chalk		13/12/24

Trench 6					
General description				Orientation	NW-SE
Two irregular shaped pits on NW end of trench, possible natural formations				Length (m)	30m
				Width (m)	1.8m
				Max. Depth	0.5m
				Min Depth	0.4m
Context No.	Type	Depth	Description	Finds	Date
6001	Topsoil	0.3m	Dark brown loose silt organic		13/12/24
6002	Subsoil	0.2m	Mid brown orange, friable, clayey silt		13/12/24
6003	Natural		White chalk		13/12/24
6004	Cut of linear	L: 1m+ W: 1.6m D: 0.36m	Linear aligned NW-SE. Shallow sides on the southern edge becoming steeper on the northern side		20/12/24
6005	Fill of [6004]	0.36m	Friable mid brown silty clay with frequent inclusions of stone and chalk		20/12/24
6006	Cut of pit	W: 3.45m D: 0.96m	Moderate break of slope with concave sides and a slightly rounded base.	Animal bone	21/12/24
6007	Lower fill of [6006]	0.33m	Firm yellowish/white clayey silt with mostly redeposited natural chalk		21/12/24
6008	Upper fill of [6006]	0.69m	Friable mid orange-brown clayey silt with infrequent chalk inclusions		21/12/24

Trench 7					
General description				Orientation	NW-SE
Blank				Length (m)	30m
				Width (m)	1.8m
				Max. Depth	0.5m
				Min Depth	0.4m
Context No.	Type	Depth	Description	Finds	Date
7001	Topsoil	0.3m	Dark brown loose silt organic		13/12/24
7002	Subsoil	0.1m	Mid brown orange, friable, clayey silt		13/12/24
7003	Natural		White chalk		13/12/24

Trench 8					
General description				Orientation	NE-SW
Possible terminus or ovoid pit at North eastern end				Length (m)	30m
				Width (m)	1.8m
				Max. Depth	0.5m
				Min Depth	0.4m
Context No.	Type	Depth	Description	Finds	Date
8001	Topsoil	0.3m	Dark brown loose silt organic		13/12/24
8002	Subsoil	0.2m	Mid brown orange, friable, clayey silt		13/12/24
8003	Natural		White chalk. Patches of orange-brown dirt observed.		13/12/24

Trench 9					
General description				Orientation	N-S
Several small pits/postholes (possibly natural) E to W running linear in center of trench Photos 954-956				Length (m)	30m
				Width (m)	1.8m
				Max. Depth	0.5
				Min Depth	0.4
Context No.	Type	Depth	Description	Finds	Date
9001	Topsoil	0.5m	Dark brown loose silt organic		16/12/24
9002	Subsoil	0.2m	Mid brown orange, friable/firm, clayey silt		16/12/24
9003	Natural		White chalk		16/12/24
9004	Cut of pit	L: 0.38m W: 0.23m D: 0.18m	Near vertical sides leading to a concave base		20/12/24
9005	Fill of [9004]	0.18m	Friable mid greyish brown silty clay occasional small chalk and rare small flints		20/12/24
9006	Cut of pit	L: 0.25m W: 0.1m D: 0.08m	West side of pit vertical, east had a gentle slope leading to a flat base		20/12/24
9007	Fill of [9006]	0.08m	Friable mid greyish brown silty clay with rare inclusions of small flint and chalk		20/12/24
9008	Cut of linear	L: NA W: 2.12m D: 0.37m	Linear aligned E-W. Gentle sloping sides with an obtuse break of slope with an uneven flat base		20/12/24

9009	Lower fill of [9008]	0.39m	Friable light brownish yellow clayey silt with very frequent chalk inclusions		20/12/24
9010	Upper fill of [9008]	0.17m	Friable mid brownish yellow silty clay with frequent small chalk stones		20/12/24
9011	Cut of pit	L: 0.24m W: 0.45m D: 0.36m	Moderately steep slope with concave base		20/12/24
9012	Fill of [9011]	0.36m	Loose/friable mid greyish brown silty clay with occasional small chalk		20/12/24
9013	Cut of linear	L: 1m+ W: 0.97m D: 0.35m	Linear aligned E-W. Moderately steep sides leading to an uneven concave base		20/12/24
9014	Lower fill of [9013]	L: 1m+ W: 0.52m D: 0.14m	Friable mid greyish brown silty clay with frequent inclusions of small chalk and chalk flecks		20/12/24
9015	Upper fill of [9013]	L: N/A W: 0.97m D: 0.14m	Friable mid reddish brown silty clay		20/12/24

Trench 10					
General description				Orientation	N-S
Diagonal linear running NE-SW at S end of trench Photos – 951- 953				Length (m)	30m
				Width (m)	1.8m
				Max. Depth	0.5m
				Min Depth	0.4m
Context No.	Type	Depth	Description	Finds	Date
10001	Topsoil	0.3m	Dark brown loose silt organic		16/12/24
10002	Subsoil	0.1m	Mid brown orange, friable/firm, clayey silt		16/12/24
10003	Natural		White chalk		16/12/24
10004	Cut of linear	L: 1m+ W: 0.71m D: 0.42m	Linear aligned SW-NE. Steep sides.		19/12/24
10005	Fill of [10004]	0.42m	Loose/friable mid brown silty clay		19/12/24

Trench 11					
General description				Orientation	N-S
blank				Length (m)	30m
				Width (m)	1.8m
				Max. Depth	0.5m
				Min Depth	0.4m
Context No.	Type	Depth	Description	Finds	Date
11001	Topsoil	0.3m	Dark brown loose silt organic		13/12/24
11002	Subsoil	0.1m	Mid brown orange, friable/firm, clayey silt		13/12/24
11003	Natural		White chalk		13/12/24

Trench 12					
General description				Orientation	NE-SW
Contains visible ring ditch Photos 0898-0900				Length (m)	30m
				Width (m)	1.8m
				Max. Depth	0.5m
				Min Depth	0.4m
Context No.	Type	Depth	Description	Finds	Date
12001	Topsoil	0.3m	Dark brown loose silt organic		12/12/24
12002	Subsoil	0.1m	Mid brown orange, friable/firm, clayey silt		12/12/24
12003	Natural		White chalk		12/12/24
12004	Cut of linear	L: 1m+ W: 2.6m D: 0.51m	Linear aligned NW-SE. Possible ring ditch. Steep sloped sides leading to a flat base. Areas of bioturbation.	Bone and worked flint	19/12/24
12005	Lower fill of [12004]	0.2m	Compact, off-white redeposited chalk		19/12/24
12006	Upper fill of [12004]	0.43m	Semi-friable mid greyish brown clayey silt with chalk and flint inclusions	Bone and worked flint	19/12/24
12007	Cut of linear	L: 1m+ W: 2.3m D: 0.55m	Curvilinear. Straight sides leading to a flat base		20/12/24
12008	Lower fill of [12007]	0.27m	Firm, yellowish/white redeposited natural chalk		21/12/24
12009	Upper fill of [12007]	0.45m	Friable, mid greyish brown clayey silt with 5% inclusions of chalk		21/12/24
12010	Fill of [12011]	0.08m	Friable mid orange-brown sand		13/12/24

12011	Cut of linear	L: 0.18m W: 0.10m D: 0.08m	Linear at SE end of TR12. Steep sides leading to an irregular base		13/12/24
12012	Fill of [12013]	0.03m	Friable/loose dark grey-brown silt		13/12/24
12013	Cut of posthole	L: 0.10m W: 0.10m D: 0.03m	Cut of posthole at SE end of TR12. Concave base with steep sides.		13/12/24
12014	Cut of posthole	L: 0.12m W: 0.11m D: 0.57m	Cut of posthole. Truncated. Filled by (12002).		13/12/24

Trench 13					
General description				Orientation	NW-SE
Two small postholes at the SE end of the trench Photos 0898-0900				Length (m)	30m
				Width (m)	1.8m
				Max. Depth	0.5m
				Min Depth	0.4m
Context No.	Type	Depth	Description	Finds	Date
13001	Topsoil	0.3m	Dark brown loose silt organic		12/12/24
13002	Subsoil	0.1m	Mid brown orange, friable, clayey silt		12/12/24
13003	Natural		White chalk		12/12/24

Trench 14					
General description				Orientation	NE-SW
Blank Photos 0901-0903				Length (m)	30m
				Width (m)	1.8m
				Max. Depth	0.5m
				Min Depth	0.4m
Context No.	Type	Depth	Description	Finds	Date
14001	Topsoil	0.3m	Dark brown loose silt organic		12/12/24
14002	Subsoil	0.1m	Mid brown orange, friable, clayey silt		12/12/24
14003	Natural		White chalk		12/12/24

Trench 15					
General description				Orientation	NW-SE
Blank One natural feature mid trench Photos 0826-0828				Length (m)	30m
				Width (m)	1.8m
				Max. Depth	0.38m
				Min Depth	0.26m
Context No.	Type	Depth	Description	Finds	Date
15001	Topsoil	0.21m	Dark brown loose silt organic		10/12/24
15002	Subsoil	0.26m	Mid brown orange, friable, clayey silt		10/12/24
15003	Natural		White chalk		10/12/24

Trench 16					
General description				Orientation	NW-SE
Two linear features Photos 0850-0852				Length (m)	30m
				Width (m)	1.8m
				Max. Depth	0.46m
				Min Depth	0.26
Context No.	Type	Depth	Description	Finds	Date
16001	Topsoil	0.09m	Loose mid greyish brown silt rare small stones		10/12/24
16002	Subsoil	0.16m	Friable mid reddish brown clayey silt occasional small – mid stones		10/12/24
16003	Natural	0.2m+	Solid light yellowish White chalk		10/12/24
16004	Cut of linear	Truncated by [16007]. Max width 0.9m	Linear aligned NE-SW. Moderate break of slope with straight sides leading to a rounded base.		19/12/24
16005	Lower fill of [16004]	0.16m	Firm light yellowish brown clayey silt with redeposited natural		19/12/24
16006	Upper fill of [16004]	0.45m	Friable mid brown, slightly grey clayey silt with infrequent inclusions of chalk		19/12/24
16007	Cut of linear	L:1m+ W: 1.38m D: 0.61m	Straight, moderately steep sides, moderate break of slope towards a relatively flat base		19/12/24
16008	Lower fill of [16007]	0.2m	Friable/firm mid yellowish/greyish brown clayey silt with frequent chalk inclusions		19/12/24
16009	Upper fill of [16007]	0.41m	Friable, loose mid brown clayey silt		19/12/24

Trench 17					
General description				Orientation	E-W
One feature in east end of trench Photos 0823-0825				Length (m)	30m
				Width (m)	1.8m
				Max. Depth	0.36m
				Min Depth	0.29m
Context No.	Type	Depth	Description	Finds	Date
17001	Topsoil	0.18m	Dark greyish brown soft silt organic		09/12/24
17002	Subsoil	0.29m	Mid greyish brown, soft, clayey silt		09/12/24
17003	Natural	0.29m+	White chalk		09/12/24
17004	Cut of linear	L:1m+ W:1.8m D: 0.64m	Linear aligned N-S. Steeply sloped edges with a rounded base.		16/12/24
17005	Lower fill of [17004]	0.39m	Loosely compacted greyish white peagrit with silt and redeposited chalk and occasional flint inclusions		16/12/24
17006	Upper fill of [17004]	0.25m	Loose dark greyish brown silt with inclusions of flint and redeposited natural chalk	Poss. Roman coin, ~30 hobnails, pot and CBM, Burnt flint, and animal bone. Small finds 1 and 2. Sample <3>	16/12/24

Trench 18					
General description				Orientation	NE-SW
Linear feature at north eastern end Photos 0820-0822				Length (m)	30m
				Width (m)	1.8m
				Max. Depth	0.42m
				Min Depth	0.24m
Context No.	Type	Depth	Description	Finds	Date
18001	Topsoil	0.14m	Mid greyish brown, soft, silt		9/12/24
18002	Subsoil	0.26m	Dark greyish brown soft, silt		9/12/24
18003	Natural	0.33m+	White chalk		9/12/24
18004	Cut of linear. Same as [19004]	L: 1m+ W: 2.3m D: 0.82m	Linear aligned NW-SE. Moderate break of slope leading to a sharp break of slope at the base. Straight sides and a flat base	Pot and CBM	11/12/24
18005	Fill of [18004]	0.82m	Loose mid brown clayey silt with frequent chalk and occasional flint inclusions. Deliberate backfill of ditch	Pot and CBM	11/12/24

Trench 19					
General description			Orientation	NE-SW	
Two natural features One pit in NW end of trench Linear feature mid trench running E-W Photos 0817-0819			Length (m)	30m	
			Width (m)	1.8m	
			Max. Depth	0.37m	
			Min Depth	0.22m	
Context No.	Type	Depth	Description	Finds	Date
19001	Topsoil	0.10m	Mid greyish brown, soft, silt		9/12/24
19002	Subsoil	0.16m	Dark greyish brown soft, silt		9/12/24
19003	Natural	0.38m+	White chalk		9/12/24
19004	Cut of linear. Same as [18004]	L: 1m+ W: 2.19m D: 0.89m	Moderate break of slope with a sharp break of slope leading towards the base. Straight sides and a flat base.	CBM and heat affected stone	10/12/24
19005	Fill of [19004]	0.89m	Loose mid brown clayey silt with moderate frequent inclusions of flint and chalk	CBM and heat affected stone	10/12/24
19006	Cut of pit	L: 1.07m W: 0.81m D: 0.36m	Pit aligned NW-SE. Moderate break of slope with straight sides leading to a sharp break of slope and a flat base		11/12/24
19007	Fill of [19006]	0.36m	Friable mid yellowish brown with redeposited natural		11/12/24

Trench 20					
General description				Orientation	E-W
Two linear features Two terminus feature Two pit features Two postholes Photos 0829-0831				Length (m)	30m
				Width (m)	1.8m
				Max. Depth	0.35m
				Min Depth	0.32m
Context No.	Type	Depth	Description	Finds	Date
20001	Topsoil	0.2m	Loose mid greyish brown silt rare small stones		10/12/24
20002	Subsoil	0.12m	Friable mid reddish brown clayey silt occasional small – mid stones		10/12/24
20003	Natural	0.35m+	Solid light yellowish White chalk		10/12/24
20004	Cut of pit	L: 0.63m W:0.38m+ D: 0.28m	Steeply sloped edges with a flat base	Lithic	10/12/24
20005	Lower fill of [20004]	0.16m	Firm and compact dark greyish brown silt with redeposited chalk	Lithic	10/12/24
20006	Upper fill of [20004]	0.12m	Dark greyish brown silt with small fragments of chalk		10/12/24
20007	Cut of pit	L:0.27m+ W: 0.43m+ D: 0.27m	Steep edges with slightly sloped base	Lithic	11/12/24
20008	Fill of [20007]	0.27m	Loose mid greyish brown silt with redeposited chalk and small pieces of flint	Lithic	11/12/24

20009	Cut of linear	L:1m+ W:0.86m D:0.13m	Linear aligned NE-SW. Slightly sloped edges with rounded base.	Pot	13/12/24
20010	Fill of [20009]	0.13m	Loose dark orange-brown silt	Pot	13/12/24
20011	Fill of [20012]	0.53m	Friable mid orange-brown sandy silt	Pot and bone	13/12/24
20012	Cut of linear	L:1m+ W: 1:19m D: 0.53m	Linear, tapering to a blunt terminus. Aligned E-W. Straight sides with a gradual break of slope leading to a concave base		13/12/24
20013	Cut of linear	L: 1m+ W: 0.83m D: 0.14m	Linear with a moderate break of slope leading to a sharp break of slope and a flat base.		12/12/24
20014	Fill of [20014]	0.14m	Loose mid greyish brown clayey silt with frequent chalk inclusions		12/12/24
20015	Cut of linear	L: 1.8m+ W: 1.36m D: 0.7m	Linear aligned NE-SW. Moderately steep sides with a moderately sharp break of slope leading to a concave base		12/12/24

20016	Lower fill of [20015]	0.16m	Loose light brownish grey clay silt with frequent chalk inclusions		12/12/24
20017	Upper fill of [20015]	0.51m	Loose mid orange-brown clay silt with frequent chalk inclusions and occasional flint inclusions	Pot, bone, oyster shell	12/12/24
20018	Cut of linear	L: 1.8m+ W: 1.37m D: 0.47m	Linear aligned NE-SW. Steep side with a sharp break of slope and a flat base		12/12/24
20019	Lower fill of [20018]	0.33m	Loose mid orange-brown clay silt with frequent inclusions of chalk and occasional flint		12/12/24
20020	Upper fill of ditch [20018]	0.13m	Friable mid orange-brown clay silt with occasional chalk inclusions	CBM	12/12/24

Trench 21					
General description			Orientation	SE-NW	
One linear in SE			Length (m)	30m	
A small curvilinear feature mid trench, going into the S edge			Width (m)	1.8m	
Two possible pits in NW			Max. Depth	0.36m	
Photos 0832-0833			Min Depth	0.31m	
Context No.	Type	Depth	Description	Finds	Date
21001	Topsoil	0.12m	Loose mid greyish brown silt rare small stones		10/12/24
21002	Subsoil	0.19m	Friable mid reddish brown clayey silt occasional small – mid stones		10/12/24
21003	Natural	0.19m+	Solid light yellowish White chalk		10/12/24
21004	Cut of linear	L: 1m+ W: 1.32m D: 0.57m.	Linear aligned NE-SW. Steep edges leading to a flat base.	Pot, bone, CBM	12/12/24
21005	Fill of [21004]	0.27m	Semi-friable yellowish white with brown flecks chalk and clayey silt. Redeposited chalk containing animal bone	Animal bone	12/12/24
21006	Fill of [21004]	0.34m	Friable mid greyish brown clayey silt with inclusions of moderate sized flint	CBM, pot	12/12/24

21007	Cut of linear	L: 1m+ W: 0.62m D: 0.14m	Linear aligned NE-SW. Moderately sloped edges leading to a flat base	Pot	13/12/24
21008	Fill of [21007]	0.14m	Friable mid greyish brown clayey silt with frequent chalk inclusions	Pot, possibly Iron Age	13/12/24
21009	Cut of linear	L:1m+ W: 0.81m D: 0.44m	Linear aligned N-S. Vertical edges leading to a flat base. Truncated by [21011]	Pot, bone	17/12/24
21010	Fill of [21009]	0.44m	Friable mid grey-brown clayey silt with frequent chalk and flint inclusions	Pot, bone	17/12/24
21011	Cut of linear	L:1m+ W: 0.69m D: 0.39m	Terminus aligned N-S. Truncates [21009]. Vertical edges leading to an irregular base	Pot, metal	17/12/24
21012	Fill of [21011]	0.39m	Friable mid grey-brown clayey silt with frequent chalk and flint inclusions	Pot, metal, small find 3	17/12/24

Trench 22					
General description				Orientation	NE-SW
1 Linear 1 possible small curvilinear Photos 0835-0837				Length (m)	30m
				Width (m)	1.8m
				Max. Depth	0.34m+
				Min Depth	
Context No.	Type	Depth	Description	Finds	Date
22001	Topsoil	0.12m	Loose, mid greyish brown silt with rare inclusions of small stone		10/12/24
22002	Subsoil	0.19m	Friable mid reddish brown, clayey silt with occasional inclusions of small stones		10/12/24
22003	Natural	0.06m+	Light yellowish white chalk		10/12/24
22004	Cut of linear	L: 0.76m W: 1m+ D: 0.56m	Linear aligned E-W. Steeply sloped edge with thin rounded base. Truncated by [22007]		10/12/24
22005	Lower fill of [22004]	0.31m	Loosely compacted light greyish brown silt with redeposited chalk and occasional flint inclusions		17/12/24
22006	Upper fill of [22004]	0.3m	Loose and crumbly mid orangeish brown silt with occasional flint and chalk inclusions		17/12/24

22007	Cut of linear	L: 1.10m W:1m+ D: 0.52m	Linear aligned E-W with sloped edges leading to a rounded base. Truncated by [22004]		17/12/24
22008	Lower fill of [22007]	0.26m	Friable mid orange-brown silt with chalk and occasional flint inclusions		17/12/24
22009	Upper fill of [22007]	0.31m	Loose dark orange-brown silt with redeposited chalk and flint inclusions		17/12/24
22010	Centre fill of two truncated ditches	0.24m	Loose dark blackish brown silt with redeposited chalk		17/12/24

Trench 23					
General description				Orientation	NW-SE
1 possible pit which continues into trench edge 3 Linear features Photos 0838-0839, 0843				Length (m)	30m
				Width (m)	1.8m
				Max. Depth	0.5m
				Min Depth	0.4m
Context No.	Type	Depth	Description	Finds	Date
23001	Topsoil	0.14m	Loose, mid greyish brown, silt occasional inclusions of small stones		10/12/24
23002	Subsoil	0.33m	Friable, mid reddish brown, clayey silt with frequent inclusions of small to medium stones		10/12/24
23003	Natural	0.4m+	Solid, light yellowish white chalk		13/12/24
23004	Cut of linear	L: 1m+ W: 1.2m D: 0.53m	Linear aligned NW-SE. Moderate break of slope at the top with a moderate break of slope leading towards a slightly flat base with concave sides. Truncates [23007]	Pot	16/12/24
23005	Lower fill of [23004]	0.31m	Friable/loose mid yellowish brown clayey silt with redeposited charcoal	Pot	16/12/24

23006	Upper fill of [23004]	0.11m	Loose dark brown silt occasional chalk inclusions		16/12/24
23007	Cut of linear	L: 1m+ W: 0.65m D: 0.28m	Linear aligned N-S. Moderate break of slope leading to a rounded base. Truncated by [23004]	CBM	16/12/24
23008	Fill of [23007]	0.28m	Loose/friable mid-light greyish brown clayey silt with occasional chalk inclusions	CBM	16/12/24
23009	Cut of pit	W: 0.8m+ – continues into L.O.E D: 0.18m	Pit with a shallow break of slope, straight sides and a flat		19/12/24
23010	Fill of [23009]	0.18m	Friable, mid greyish brown clayey silt with occasional chalk inclusions		19/12/24
23014	Cut of pit	L: 0.49m+ W: 0.97m D: 0.48m	Cut of possible pit or terminus. Steeply sloped edges with a rounded base		18/12/24
23015	Fill of [23014]	0.48m	Loose friable mid greyish brown silt with frequent flint inclusions and redeposited chalk		18/12/24

23016	Cut of linear	L: 1m W: 1.02m D: 0.34m	Linear aligned N-S. Moderately sloped edge Truncates [23018]		18/12/24
23017	Fill of [23016]	0.34m	Semi-friable mid grey-brown clayey silt with frequent flint and chalk inclusions		18/12/24
23018	Cut of linear	L: 1m W: 0.34m D: 0.2m	Linear aligned N-S. Steep sides with an irregular base. Truncated by [23016].	Pot	18/12/24
23019	Fill of [23018]	0.2m	Semi-friable, mid grey-brown clayey silt with small chalk and flint inclusions	Pot	18/12/24

Trench 24					
General description				Orientation	NE-SW
2 Linear features, possible burning 4 Pits Photos 0844-0846				Length (m)	30m
				Width (m)	1.8m
				Max. Depth	0.5m
				Min Depth	0.4m
Context No.	Type	Depth	Description	Finds	Date
24001	Topsoil	0.12m	Loose, mid greyish brown silt with inclusions of rare small stones		10/12/24
24002	Subsoil	0.33m	Friable, mid reddish brown, clayey silt, occasional small stones		10/12/24
24003	Natural	0.41m+	Solid, light yellowish white chalk		10/12/24
24004	Cut of pit	L: 0.44m W: 0.42m D: 0.09m	Shallow break of slope, straight sides leading to a rounded base		18/12/24
24005	Fill of [24004]	0.09m	Friable mid greyish brown clayey silt with infrequent inclusions of chalk		18/12/24
24006	Cut of pit	L: 0.39m W: 0.4m D: 0.09m	Moderate break of slope with concave sides and a rounded base		18/12/24
24007	Fill of [24006]	0.09m	Friable mid greyish brown with infrequent inclusions of chalk		18/12/24
24008	Lower fill of [24009]	0.07m	Friable mid orange-brown/white chalk clayey silt, mostly with redeposited natural chalk		18/12/24

24009	Cut of linear	W:0.74m D: 0.44m	Linear aligned NW-SE. Sharp break of slope at the top and bottom, with concave sides leading to a rounded base.		18/12/24
24010	Upper fill of [24009]	0.33m	Loose mid greyish brown clayey silt with infrequent inclusions of chalk		18/12/24
24011	Fill of [24012]	0.07m	Friable, mid yellowish brown clayey silt with occasional chalk inclusions		18/12/24
24012	Cut of pit	L: 0.5m W: 0.5m D: 0.07m	Shallow break of slope with straight sides leading to a flat base		18/12/24
24013	Cut of pit	L: Under L.O.E W: 0.6m D: 0.22m	Shallow/moderate break of slope, with straight sides and a rounded base		18/12/24
24014	Fill of [24013]	0.22m	Loose dark brown silt. Sample <2>		18/12/24
24015	Lower fill of [24017]	0.38m	Semi-friable mid grey-brown clayey silt with chalk and flint inclusions		19/12/24
24016	Upper fill of [24017]	0.31m	Semi-firm dark brown black clayey silt. Heavily burnt. Sample <4>	Animal bone, CBM	19/12/24
24017	Cut of linear	L: 1m+ W: 1.62m D: 0.4m	Linear aligned SE-NW. Steep sloping sides with a flat base.	Animal bone, Post medieval CBM	19/12/24

Trench 25					
General description				Orientation	E-W
Blank Photos 0873-0875				Length (m)	30m
				Width (m)	1.8m
				Max. Depth	0.5m
				Min Depth	0.4m
Context No.	Type	Depth	Description	Finds	Date
25001	Topsoil	0.3m	Dark brown silt		12/12/24
25002	Subsoil	0.1m	Mid brown orange clayey silt		12/12/24
25003	Natural		White chalk, orange/brown disturbances		12/12/24

Trench 26					
General description				Orientation	SE-NW
Blank Photos 0882-0884				Length (m)	30m
				Width (m)	1.8m
				Max. Depth	0.5m
				Min Depth	0.4m
Context No.	Type	Depth	Description	Finds	Date
26001	Topsoil	0.3m	Dark brown silt		12/12/24
26002	Subsoil	0.15m	Mid brown orange clayey silt		12/12/24
26003	Natural		White chalk, orange/brown disturbances		12/12/24

Trench 27					
General description				Orientation	N-S
Blank Photos 0892-0894				Length (m)	30m
				Width (m)	1.8m
				Max. Depth	0.5m
				Min Depth	0.4m
Context No.	Type	Depth	Description	Finds	Date
27001	Topsoil	0.3m	Dark brown silt		12/12/24
27002	Subsoil	0.1m	Firm/friable mid brown orange clayey silt		12/12/24
27003	Natural		White chalk,		12/12/24

Trench 28					
General description				Orientation	E-W
Blank Photos 0889-0891				Length (m)	30m
				Width (m)	1.8m
				Max. Depth	0.5m
				Min Depth	0.4m
Context No.	Type	Depth	Description	Finds	Date
28001	Topsoil	0.3m	Dark brown loose silt		12/12/24
28002	Subsoil	0.1m	Mid brown orange clayey silt		12/12/24
28003	Natural		White chalk, tttt		12/12/24

Trench 29					
General description				Orientation	N-S
3 small pits 1 Linear features Photos 1082-1086				Length (m)	30m
				Width (m)	1.8m
				Max. Depth	0.47m
				Min Depth	0.27m
Context No.	Type	Depth	Description	Finds	Date
29001	Topsoil	0.35	Dark greyish brown silt		10/12/24
29002	Subsoil	0.15	Mid brown orange clayey silt		10/12/24
29003	Natural		White chalk, and peagrit		10/12/24
29004	Cut of pit	L: 0.5m W: 0.45m D: 0.10m	Steep break of slope with concave side leading to a shallow break of slope and a flat base		09/01/25
29005	Cut of [29004]	0.10m	Friable mid greyish brown clayey silt with infrequent chalk inclusions		09/01/25
29006	Cut of pit	L: 0.7m W: 0.71m D: 0.32m	Almost vertical sides with a sharp break of slope leading to a flat base with a slightly square profile.		09/01/25
29007	Fill of [29006]]	0.32m	Friable mid greyish brown clayey silt		09/01/25
29008	Cut of linear	L: 1m+ W: 1.1m D: 0.34m	Linear aligned E-W. Moderate break of slope with stepped sides leading to a flattish base		09/01/25
29009	Fill of [29008]	0.34m	Friable mid greyish brown clayey silt with infrequent chalk inclusions		09/01/25
29010	Cut of pit	L: 1.7m W: 1.7m D: 1.2m	Vertical sides with a flat base		09/01/25

29011	Lower fill of [29010]	0.28m	Loose greyish brown silty friable clay with common chalk gravels. Backfill deposit	Pot and burnt flint	09/01/25
29012	Northern fill of [29010]	0.18m	Loose pale brown and white chalk with rare flint nodule inclusions. Caused through weathering and the slumping of the natural deposit		09/01/25
29013	Southern fill of [29010]	0.32m	Loose pale brown white chalk with rare flint nodule inclusions.		09/01/25

Trench 30					
General description				Orientation	E-W
1 Large pit 1 Small linear 1 Pit Photos 1076-1077, 1087				Length (m)	30m
				Width (m)	1.8m
				Max. Depth	0.57m
				Min Depth	0.38m
Context No.	Type	Depth	Description	Finds	Date
30001	Topsoil	0.31m	Friable dark greyish brown silt		07/01/25
30002	Subsoil	0.42m	Mid greyish brown silt with frequent inclusions of redeposited chalk		07/01/25
30003	Natural	0.42m+	White chalk,		07/01/25
30004	Cut of pit	L: 0.37m W: 0.63m D: 0.49m	NW-SE aligned pit. Moderate break of slope with moderately straight sides leading to a rounded base. Most likely small tree throw		09/01/25
30005	Lower fill of [30004]	0.1m	Friable greyish yellow clay with redeposited natural		09/01/25
30006	Upper fill of [30004]	0.26m	Loose mid brown clayey silt with infrequent chalk inclusions		09/01/25
30007	Cut of pit	L: 0.59m W: 0.65m D: 0.22m	NW-SE aligned pit. Moderate break of slope with concave sides leading to a rounded base. Possible tree throw		09/01/25
30008	Fill of [30007]	0.22m	Loose/friable mid greyish brown clayey silt with infrequent chalk inclusions. Possible tree throw		09/01/25

30009	Cut of linear	L: 4m W: 1m D: 0.52m	Linear aligned N-S. Steeply sloped sides, base not reached due to unsafe depth next to bulk exceeding 1.2m. Bronze Age segmented ring ditch.	Animal teeth	13/01/25
30010	Lower fill of [30009]	0.43m	Semi-compact yellowish white silty chalk with moderate flint inclusions		13/01/25
30011	Upper fill of [30009]	0.34m	Semi-friable mid greyish brown clayey silt with infrequent chalk and flint inclusions		13/01/25

Trench 31					
General description				Orientation	NW-SE
Blank Photos 1078-1081				Length (m)	30m
				Width (m)	1.8m
				Max. Depth	0.65m
				Min Depth	0.44m
Context No.	Type	Depth	Description	Finds	Date
31001	Topsoil	0.31m	Friable dark greyish brown silt		07/01/25
31002	Subsoil	0.43m	Mid orange-brown silt with frequent chalk deposits		07/01/25
31003	Natural	0.43m+	White chalk/pale pea grit		07/01/25

Trench 32					
General description				Orientation	SE-NW
Blank Photos 1113-1115				Length (m)	30m
				Width (m)	1.8m
				Max. Depth	0.6m
				Min Depth	0.4m
Context No.	Type	Depth	Description	Finds	Date
32001	Topsoil	0.3m	Dark brown silt		09/01/25
32002	Subsoil	0.3m	Reddish brown silty clay		09/01/25
32003	Natural		Yellowish white chalk		09/01/25

Trench 33					
General description				Orientation	N-S
Blank Photos 1116-1118				Length (m)	30m
				Width (m)	1.8m
				Max. Depth	0.5m
				Min Depth	0.4m
Context No.	Type	Depth	Description	Finds	Date
33001	Topsoil	0.3m	Dark brown silt		09/01/25
33002	Subsoil	0.2m	Reddish mid brown silty clay with moderately frequent chalk inclusions		09/01/25
33003	Natural		Yellowish white chalk		09/01/25

Trench 34					
General description				Orientation	NE-SW
Blank Photos 1119-1121				Length (m)	30m
				Width (m)	1.8m
				Max. Depth	0.5m
				Min Depth	0.4m
Context No.	Type	Depth	Description	Finds	Date
34001	Topsoil	0.3m	Dark brown silt		09/01/25
34002	Subsoil	0.15m	Mid reddish brown		09/01/25
34003	Natural		Yellowish white chalk		09/01/25

Trench 35					
General description				Orientation	SE-NW
2 Linear features Photos 1122-1124				Length (m)	30m
				Width (m)	1.8m
				Max. Depth	0.6m
				Min Depth	0.4m
Context No.	Type	Depth	Description	Finds	Date
35001	Topsoil	0.3m	Dark brown silt		09/01/25
35002	Subsoil	0.3m	Mid reddish brown clayey silt		09/01/25
35003	Natural		Yellowish white mottled brown		09/01/25
35004	Cut of linear	L: 1.07m W: 1m D: 0.29m	Linear aligned N-S. Flat base with moderately steep sides. Parallel ditch [35006] adjacent – no relationship determined		17/01/25
35005	Fill of [35004]	0.29m	Semi-friable mid greyish brown clayey silt with frequent inclusions of large flint		17/01/25
35006	Cut of linear	L: 1m W: 1.17m D: 0.41m	Linear aligned N-S. Moderately steep sides with a flat base. Heavy bioturbation.		17/01/25
35007	Fill of [35006]	0.41m	Semi-friable mid greyish brown clayey silt with frequent inclusions of large flint		17/01/25

Trench 36					
General description				Orientation	E-W
Blank				Length (m)	30m
				Width (m)	1.8m
				Max. Depth	0.5m
				Min Depth	0.4m
Context No.	Type	Depth	Description	Finds	Date
36001	Topsoil	0.3m	Dark brown silt		10/12/24
36002	Subsoil	0.2m	Mid brown orange clayey silt		10/12/24
36003	Natural		White chalk, orange/brown disturbances		10/12/24
36004	Cut of linear	L: 1m W: 0.45m D: 0.1m	Linear aligned N-S. Shallow, steep edges with a flat base.		15/01/25
36005	Fill of [36004]	0.1m	Friable mid greyish brown clayey silt with inclusions of large flint.		15/01/25

Trench 37					
General description				Orientation	E-W
Blank Photos 1128-1130				Length (m)	30m
				Width (m)	1.8m
				Max. Depth	0.5m
				Min Depth	0.4m
Context No.	Type	Depth	Description	Finds	Date
37001	Topsoil	0.3m	Dark brown silt with infrequent inclusions of subangular stones and chalk		10/01/25
37002	Subsoil	0.1m	Reddish brown clayey silt with moderately frequent chalk inclusions		10/01/25
37003	Natural		Yellowish white chalk		10/01/25

Trench 38					
General description				Orientation	N-S
Blank Photos 1131-1133				Length (m)	30m
				Width (m)	1.8m
				Max. Depth	0.5m
				Min Depth	0.4m
Context No.	Type	Depth	Description	Finds	Date
38001	Topsoil	0.3m	Dark brown silt with infrequent inclusions of chalk and subangular stone		10/01/25
38002	Subsoil	0.1m	Reddish brown clayey silt with moderately frequent chalk		10/01/25
38003	Natural		Yellowish white chalk		10/01/25

Trench 39					
General description				Orientation	E-W
Blank Photos 1134-1136				Length (m)	30m
				Width (m)	1.8m
				Max. Depth	0.5m
				Min Depth	0.4m
Context No.	Type	Depth	Description	Finds	Date
39001	Topsoil	0.3m	Dark brown silt with infrequent inclusions of chalk and subangular stones		10/01/25
39002	Subsoil	0.1m	Reddish brown clayey silt with moderately frequent chalk inclusions		10/01/25
39003	Natural		Yellow white chalk		10/01/25

Trench 40					
General description				Orientation	N-S
Blank Photos: 1137-1139				Length (m)	30m
				Width (m)	1.8m
				Max. Depth	0.6m
				Min Depth	0.4m
Context No.	Type	Depth	Description	Finds	Date
40001	Topsoil	0.3m	Dark brown silt		10/01/25
40002	Subsoil	0.2m	Reddish brown clayey subsoil		10/01/25
40003	Natural		Yellowish white chalk		10/01/25

Trench 41					
General description				Orientation	N-S
Blank Photos 1140-1142				Length (m)	30m
				Width (m)	1.8m
				Max. Depth	0.5m
				Min Depth	0.4m
Context No.	Type	Depth	Description	Finds	Date
41001	Topsoil	0.3m	Dark brown silt		10/01/25
41002	Subsoil	0.1m	Reddish brown silty clay		10/01/25
41003	Natural		Red clay natural		10/01/25

Trench 42					
General description				Orientation	E-W
Blank				Length (m)	30m
				Width (m)	1.8m
				Max. Depth	0.5m
				Min Depth	0.4m
Context No.	Type	Depth	Description	Finds	Date
42001	Topsoil	0.3m	Dark brown silt		10/12/24
42002	Subsoil	0.1m	Mid brown orange clayey silt		10/12/24
42003	Natural		White chalk, orange/brown disturbances		10/12/24

Trench 43					
General description				Orientation	N-S
Blank Photos 1159-1161				Length (m)	30m
				Width (m)	1.8m
				Max. Depth	0.5m
				Min Depth	0.4m
Context No.	Type	Depth	Description	Finds	Date
43001	Topsoil	0.3m	Dark brown clayey silt		10/01/25
43002	Subsoil	0.1m	Reddish brown silty clay		10/01/25
43003	Natural		Red clay with natural flint inclusions		10/01/25

Trench 44					
General description				Orientation	N-S
Blank Photos 1166-1169				Length (m)	30m
				Width (m)	1.8m
				Max. Depth	0.5m
				Min Depth	0.4m
Context No.	Type	Depth	Description	Finds	Date
44001	Topsoil	0.3m	Dark brown clayey silt with infrequent chalk and subangular stone inclusions		13/01/25
44002	Subsoil	0.1m	Mid orange-brown with frequent inclusions of subangular stones and infrequent chalk		13/01/25
44003	Natural		Red clay		13/01/25

Trench 45					
General description				Orientation	N-S
Blank Photos 1170-1172				Length (m)	30m
				Width (m)	1.8m
				Max. Depth	
				Min Depth	
Context No.	Type	Depth	Description	Finds	Date
45001	Topsoil		Dark brown clayey silt with infrequent chalk		13/01/25
45002	Subsoil		Mid orange/greyish brown silty clay		13/01/25
45003	Natural		Red clay with natural flint inclusions		13/01/25

Trench 46					
General description				Orientation	N-S
Blank Photos 1174-1176				Length (m)	30m
				Width (m)	1.8m
				Max. Depth	0.5m
				Min Depth	0.4m
Context No.	Type	Depth	Description	Finds	Date
46001	Topsoil	0.3m	Dark brown clayey silt		13/01/25
46002	Subsoil	0.1m	Mid greyish orange-brown silty clay		13/01/25
46003	Natural		Red clay		13/01/25

Trench 47					
General description				Orientation	N-S
Blank Photos 1177-1179				Length (m)	30m
				Width (m)	1.8m
				Max. Depth	0.5m
				Min Depth	0.4m
Context No.	Type	Depth	Description	Finds	Date
47001	Topsoil	0.3m	Dark brown clayey silt		13/01/25
47002	Subsoil	0.1m	Mid orange-brown silty clay		13/01/25
47003	Natural		Mottled white yellow orange chalk		13/01/25

Trench 48					
General description				Orientation	N-S
Blank Photos 1180-1182				Length (m)	30m
				Width (m)	1.8m
				Max. Depth	0.6m
				Min Depth	0.5m
Context No.	Type	Depth	Description	Finds	Date
48001	Topsoil	0.4m	Dark brown silt		13/01/25
48002	Subsoil	0.1m	Mid brown orange clayey silt		13/01/25
48003	Natural		White chalk, orange/brown disturbances		13/01/25

Trench 49					
General description				Orientation	NW-SE
Blank				Length (m)	30m
				Width (m)	1.8m
				Max. Depth	0.5m
				Min Depth	0.4m
Context No.	Type	Depth	Description	Finds	Date
49001	Topsoil	0.3m	Greyish brown silty clay		15/01/25
49002	Subsoil	0.1m	Brownish grey silty clay		15/01/25
49003	Natural		Orangeish white chalk		15/01/25

Trench 50					
General description				Orientation	SE-NW
Blank				Length (m)	30m
				Width (m)	1.8m
				Max. Depth	0.5m
				Min Depth	0.4m
Context No.	Type	Depth	Description	Finds	Date
50001	Topsoil	0.3m	Greyish brown silty clay		15/01/25
50002	Subsoil	0.15m	Brownish grey silty clay		15/01/25
50003	Natural		Orangeish white chalk		15/01/25

Trench 51					
General description				Orientation	SE-NW
Blank				Length (m)	30m
				Width (m)	1.8m
				Max. Depth	0.5m
				Min Depth	0.5m
Context No.	Type	Depth	Description	Finds	Date
51001	Topsoil	0.3m	Greyish brown silty clay		13/01/25
51002	Subsoil	0.2m	Brownish grey silty clay		13/01/25
51003	Natural		Orangeish brown silty clay		13/01/25

Trench 52					
General description				Orientation	SE-NW
Blank Photos 1202-1204				Length (m)	30m
				Width (m)	1.8m
				Max. Depth	0.25m
				Min Depth	
Context No.	Type	Depth	Description	Finds	Date
52001	Topsoil	0.2m	Brownish grey silty clay with frequent small flint inclusions		14/01/25
52002	Subsoil	0.05m	Greyish brown silty clay with frequent inclusions of small flint		14/01/25
52003	Natural		Orangeish white chalk		14/01/25

Trench 53					
General description				Orientation	NE-SW
Blank Photos 1205-1207				Length (m)	30m
				Width (m)	1.8m
				Max. Depth	0.2m
				Min Depth	
Context No.	Type	Depth	Description	Finds	Date
53001	Topsoil	0.15m	Brownish grey silty clay with frequent small chalk and flint inclusions		15/01/25
53002	Subsoil	0.05m	Greyish brown silty clay with frequent inclusions of small chalk and flint		15/01/25
53003	Natural		Orangeish white chalk with moderate flint inclusions		15/01/25

Trench 54					
General description				Orientation	SE-NW
Blank Photos 1213-1215				Length (m)	30m
				Width (m)	1.8m
				Max. Depth	0.3m
				Min Depth	0.2m
Context No.	Type	Depth	Description	Finds	Date
54001	Topsoil	0.2m	Brownish grey silty clay		14/01/25
54002	Subsoil	0.1m	Greyish brown silty clay		14/01/25
54003	Natural		Orangeish brown silty clay		14/01/25

Trench 55					
General description				Orientation	NE-SW
Blank Photos 1211-1213				Length (m)	30m
				Width (m)	1.8m
				Max. Depth	0.5m
				Min Depth	0.4m
Context No.	Type	Depth	Description	Finds	Date
55001	Topsoil	0.3m	Brownish grey silty clay with frequent inclusions of small chalk and flint		15/01/25
55002	Subsoil	0.1m	Greyish brown silty clay with frequent inclusions of small chalk and flint		15/01/25
55003	Natural		Orangeish brown silty clay with frequent inclusions of small chalk and flint		15/01/25

Trench 56					
General description				Orientation	NE-SW
Blank				Length (m)	30m
				Width (m)	1.8m
				Max. Depth	0.5m
				Min Depth	0.4m
Context No.	Type	Depth	Description	Finds	Date
56001	Topsoil	0.3m	Brownish grey silty clay with frequent chalk and flint inclusions		15/01/25
56002	Subsoil	0.1m	Mid brown orange clayey silt		15/01/25
56003	Natural		White chalk, orange/brown disturbances		15/01/25

Trench 57					
General description				Orientation	SE-NW
Blank Photos 1314-1316				Length (m)	30m
				Width (m)	1.8m
				Max. Depth	0.5m
				Min Depth	0.4m
Context No.	Type	Depth	Description	Finds	Date
57001	Topsoil	0.3m	Brownish grey silty clay		16/01/25
57002	Subsoil	0.1m	Greyish brown silty clay		16/01/25
57003	Natural		Reddish brown clay with flints		16/01/25

Trench 58					
General description				Orientation	NW-SE
Blank Photos 1311-1313				Length (m)	30m
				Width (m)	1.8m
				Max. Depth	0.5m
				Min Depth	0.4m
Context No.	Type	Depth	Description	Finds	Date
58001	Topsoil	0.3m	Brownish grey silty clay		16/01/25
58002	Subsoil	0.1m	Greyish brown silty clay		16/01/25
58003	Natural		Reddish brown clay with flints		16/01/25

Trench 59					
General description				Orientation	N-S
Blank Photos 1317-1319				Length (m)	30m
				Width (m)	1.8m
				Max. Depth	0.5m
				Min Depth	0.4m
Context No.	Type	Depth	Description	Finds	Date
59001	Topsoil	0.3m	Brownish grey silty clay		16/01/25
59002	Subsoil	0.15m	Greyish brown silty clay		16/01/25
59003	Natural		Reddish brown clay with flint		16/01/25

Trench 60					
General description				Orientation	N-S
Blank Photos 1324-1326				Length (m)	30m
				Width (m)	1.8m
				Max. Depth	0.5m
				Min Depth	0.4m
Context No.	Type	Depth	Description	Finds	Date
60001	Topsoil	0.3m	Brownish grey silty clay		17/01/25
60002	Subsoil	0.1m	Greyish brown silty clay		17/01/25
60003	Natural		Reddish brown clay		17/01/25

Trench 61					
General description				Orientation	NE-SW
Blank trench				Length (m)	30m
				Width (m)	1.8m
				Max. Depth	0.5m
				Min Depth	0.4m
Context No.	Type	Depth	Description	Finds	Date
61001	Topsoil	0.3m	Brownish-grey silty clay		17/01/25
61002	Subsoil	0.1m	Greyish brown silty clay		17/01/25
61003	Natural		Reddish-brown clay with flint inclusions		17/01/25

Trench 62					
General description				Orientation	NW-SE
Blank trench				Length (m)	30m
				Width (m)	1.8m
				Max. Depth	0.5m
				Min Depth	0.4m
Context No.	Type	Depth	Description	Finds	Date
62001	Topsoil	0.3m	Brownish-grey silty clay		16/01/25
62002	Subsoil	0.15m	Greyish-brown silty clay		16/01/25
62003	Natural		Reddish-brown clay with flint inclusions		16/01/25

Trench 63					
General description				Orientation	NE-SW
Blank				Length (m)	30m
				Width (m)	1.8m
				Max. Depth	0.5m
				Min Depth	0.4m
Context No.	Type	Depth	Description	Finds	Date
63001	Topsoil	0.3m	Brownish-grey silty clay		16/01/25
63002	Subsoil	0.1m	Greyish-brown silty clay		16/01/25
63003	Natural		Reddish-brown clay with flint inclusions		16/01/25

Trench 64					
General description				Orientation	N-S
Blank trench				Length (m)	30m
				Width (m)	1.8m
				Max. Depth	0.5m
				Min Depth	0.4m
Context No.	Type	Depth	Description	Finds	Date
64001	Topsoil	0.3m	Brownish-grey silty clay		16/01/25
64002	Subsoil	0.1m	Greyish brown silty clay		16/01/25
64003	Natural		Reddish-brown clay with flint inclusions		16/01/25

Trench 65					
General description				Orientation	NW-SE
Blank trench				Length (m)	30m
				Width (m)	1.8m
				Max. Depth	0.5m
				Min Depth	0.4m
Context No.	Type	Depth	Description	Finds	Date
65001	Topsoil	0.3m	Brownish-grey silty clay		16/01/25
65002	Subsoil	0.1m	Greyish brown silty clay		16/01/25
65003	Natural		Reddish-brown clay with flint inclusions		16/01/25

Trench 66					
General description				Orientation	E-W
Blank trench				Length (m)	30m
				Width (m)	1.8m
				Max. Depth	0.5m
				Min Depth	0.4m
Context No.	Type	Depth	Description	Finds	Date
66001	Topsoil	0.3m	Brownish-grey silty clay		16/01/25
66002	Subsoil	0.1m	Greyish brown silty clay		16/01/25
66003	Natural		Reddish-brown clay with flint inclusions		16/01/25

Trench 67					
General description				Orientation	NW-SE
Blank trench				Length (m)	30m
				Width (m)	1.8m
				Max. Depth	0.6m
				Min Depth	0.5m
Context No.	Type	Depth	Description	Finds	Date
67001	Topsoil	0.3m	Brownish-grey silty clay		16/01/25
67002	Subsoil	0.2m	Greyish brown silty clay		16/01/25
67003	Natural		Orange white chalk and reddish-brown clay with flint inclusions		16/01/25

Trench 68					
General description				Orientation	NE-SW
Blank trench				Length (m)	30m
				Width (m)	1.8m
				Max. Depth	0.5m
				Min Depth	0.5m
Context No.	Type	Depth	Description	Finds	Date
68001	Topsoil	0.3m	Brownish-grey silty clay		16/01/25
68002	Subsoil	0.2m	Greyish brown silty clay		16/01/25
68003	Natural		Orange-white chalk with frequent flint inclusions		16/01/25

Trench 69					
General description				Orientation	NW-SE
Blank trench				Length (m)	30m
				Width (m)	1.8m
				Max. Depth	0.5m
				Min Depth	0.5m
Context No.	Type	Depth	Description	Finds	Date
69001	Topsoil	0.3m	Brownish-grey silty clay		16/01/25
69002	Subsoil	0.2m	Greyish brown silty clay		16/01/25
69003	Natural		Reddish-brown clay with flint inclusions		16/01/25

Trench 70					
General description				Orientation	N-S
Blank trench				Length (m)	30m
				Width (m)	1.8m
				Max. Depth	0.5m
				Min Depth	0.4m
Context No.	Type	Depth	Description	Finds	Date
70001	Topsoil	0.3m	Brownish-grey silty clay		15/01/25
70002	Subsoil	0.1m	Greyish brown silty clay		15/01/25
70003	Natural		Reddish-brown clay with flint inclusions		15/01/25

Trench 71					
General description				Orientation	NW-SE
Possible linear towards the northwestern end of the trench, aligned NE-SW				Length (m)	30m
				Width (m)	1.8m
				Max. Depth	0.5m
				Min Depth	0.4m
Context No.	Type	Depth	Description	Finds	Date
71001	Topsoil	0.3m	Brownish-grey silty clay with frequent inclusions of small chalk and flint		14/01/25
71002	Subsoil	0.15m	Greyish brown silty clay with frequent inclusions of small chalk and flint		14/01/25
71003	Natural		Orange-white chalk with moderate flint inclusions		14/01/25

Trench 72					
General description				Orientation	NW-SE
Multiple linears present towards the northern end of the trench. Trench was extended on the southwestern edge to catch additional linears. Linears are [72013], [72007], [72010].				Length (m)	30m
				Width (m)	1.8m
				Max. Depth	0.6m
				Min Depth	0.4m
Context No.	Type	Depth	Description	Finds	Date
72001	Topsoil	0.3m	Brownish-grey silty clay with frequent inclusions of chalk and flint		14/01/25
72002	Subsoil	0.1m	Greyish brown silty clay with frequent inclusions of chalk and flint		14/01/25
72003	Hillwash	0.15	Orange-brown silty clay with frequent inclusions of chalk		14/01/25
72004	Natural		Orange white chalk with moderate flint inclusions		14/01/25
72005	Basal fill of ditch [72013]	0.23m	Fill consists of a white degraded chalk		10/01/25
72006	Upper fill of ditch [72013]	0.16m	Moderately compact reddish brown silty clay with occasional flint inclusions		10/01/25
72007	Cut of linear. Same as [72010]	L: >0.85 W: >0.4m D:0.2m	NW-SE aligned ditch		10/01/25

72008	Basal fill of ditch [72007]	0.15m	Moderately compact white degraded chalk		10/01/25
72009	Upper fill of ditch [72007]	0.25m	Moderately compact reddish brown silty clay with inclusions of common flint gravels		10/01/25
72010	Cut of linear. Same as [72007]	L: >1m W: 0.96m D: 0.26m	NW-SE aligned curvilinear		10/01/25
72011	Basal fill of ditch [72010]	0.16m	Moderately compact white degraded chalk		10/01/25
72012	Upper fill of ditch [72010]	0.09m	Moderately compact reddish brown silty clay with common flint gravel inclusions		10/01/25
72013	Cut of ditch	L: >2.5m W: 2.1m D: 0.4m	NE-SW aligned ditch at SE end of TR72.		10/01/25

Trench 73					
General description				Orientation	NW-SE
Posthole [73004] present at the southeastern end of the trench				Length (m)	30m
				Width (m)	1.8m
				Max. Depth	0.5m
				Min Depth	0.4m
Context No.	Type	Depth	Description	Finds	Date
73001	Topsoil	0.3m	Brownish-grey silty clay with frequent inclusions of small chalk and flint		14/01/25
73002	Subsoil	0.2m	Greyish brown silty clay with frequent inclusions of chalk and flint		14/01/25
73003	Natural		Greyish white chalk with occasional flint inclusions		14/01/25
73004	Cut of posthole	L: 0.32m W: 0.32m D: 0.3m	Posthole at eastern end of trench 73. Vertical sides leading to a flat base. Isolated posthole, possibly part of fence line		13/01/25
73005	Fill of [73004]	0.3m	Friable, mid greyish brown clayey silt with no inclusions		13/01/25

Trench 74					
General description				Orientation	NE-SW
Blank trench				Length (m)	30m
				Width (m)	1.8m
				Max. Depth	0.5m
				Min Depth	0.4m
Context No.	Type	Depth	Description	Finds	Date
74001	Topsoil	0.3m	Brownish-grey silty clay		15/01/25
74002	Subsoil	0.15m	Greyish brown silty clay		15/01/25
74003	Natural		Reddish-brown clay with frequent flint inclusions		15/01/25

Trench 75					
General description				Orientation	NW-SE
1 posthole				Length (m)	30m
				Width (m)	1.8m
				Max. Depth	0.5m
				Min Depth	0.4m
Context No.	Type	Depth	Description	Finds	Date
75001	Topsoil	0.3m	Brownish-grey silty clay		15/01/25
75002	Subsoil	0.15m	Greyish brown silty clay		15/01/25
75003	Hillwash	0.1m	Reddish-brown clay with flint inclusions		15/01/25
75004	Cut of posthole	L: >0.7m W: >0.35m D: 0.10m	Sub-circular posthole at western end of TR75. Concave sides leading to a flat base		14/01/25
75005	Fill of posthole [75004]	0.10m	Loose dark grey-brown silty clay with abundant inclusions of charcoal		14/01/25

Trench 76					
General description				Orientation	NW-SE
Blank trench				Length (m)	30m
				Width (m)	1.8m
				Max. Depth	0.5m
				Min Depth	0.5m
Context No.	Type	Depth	Description	Finds	Date
76001	Topsoil	0.3m	Brownish-grey silty clay		14/01/25
76002	Subsoil	0.2m	Greyish brown silty clay		14/01/25
76003	Natural		Yellow-white chalk		14/01/25

Trench 77					
General description				Orientation	N-S
Blank trench				Length (m)	30m
				Width (m)	1.8m
				Max. Depth	0.5m
				Min Depth	0.4m
Context No.	Type	Depth	Description	Finds	Date
77001	Topsoil	0.3m	Brownish-grey silty clay		14/01/25
77002	Subsoil	0.1m	Greyish brown silty clay		14/01/25
77003	Natural		Orange-white chalk with moderate inclusions of flint		14/01/25

Trench 78					
General description				Orientation	NW-SE
Blank				Length (m)	30m
				Width (m)	1.8m
				Max. Depth	0.5m
				Min Depth	0.4m
Context No.	Type	Depth	Description	Finds	Date
78001	Topsoil	0.3m	Brownish-grey silty clay		15/01/25
78002	Subsoil	0.1m	Greyish brown silty clay		15/01/25
78003	Hillwash	0.1m	Reddish-brown clay with flint inclusions		15/01/25
78004	Natural		Light reddish-brown silty clay		15/01/25

Trench 79					
General description				Orientation	N-S
Blank trench				Length (m)	30m
				Width (m)	1.8m
				Max. Depth	0.5m
				Min Depth	0.4m
Context No.	Type	Depth	Description	Finds	Date
79001	Topsoil	0.3m	Brownish-grey silty clay		14/01/25
79002	Subsoil	0.2m	Greyish brown silty clay		14/01/25
79003	Natural		Orange-white chalk		14/01/25

Trench 80					
General description				Orientation	NW-SE
Blank trench				Length (m)	30m
				Width (m)	1.8m
				Max. Depth	0.5m
				Min Depth	0.4m
Context No.	Type	Depth	Description	Finds	Date
80001	Topsoil	0.3m	Brownish-grey silty clay		15/01/25
80002	Subsoil	0.15m	Greyish brown silty clay		15/01/25
80003	Natural		Orange-white chalk		15/01/25

Trench 81					
General description				Orientation	NW-SE
Blank trench				Length (m)	30m
				Width (m)	1.8m
				Max. Depth	0.7m
				Min Depth	0.5m
Context No.	Type	Depth	Description	Finds	Date
81001	Topsoil	0.3m	Brownish-grey silty clay		15/01/25
81002	Subsoil	0.15m	Greyish brown silty clay		15/01/25
81003	Hillwash	0.3m	Reddish-brown silty clay with frequent flint inclusions		15/01/25
81004	Natural		Light reddish-brown silty clay		15/01/25

Trench 82					
General description				Orientation	NW-SE
2 Linears present. [82004] at northwestern edge and [82007] and southeastern edge.				Length (m)	30m
				Width (m)	1.8m
				Max. Depth	0.5m
				Min Depth	0.4m
Context No.	Type	Depth	Description	Finds	Date
82001	Topsoil	0.3m	Brownish-grey silty clay		15/01/25
82002	Subsoil	0.15m	Greyish brown silty clay		15/01/25
82003	Natural		Orange-white chalk		15/01/25
82004	Cut of linear	L: 1.04m W: 1m D: 0.55m	Linear aligned N-S. Steep sloped sides leading to a mostly flat base.		15/01/25
82005	Lower fill of [82004]	0.30m	Semi-compact greyish white silty chalk with small infrequent flint inclusions and redeposited chalk		15/01/25
82006	Upper fill of [82004]	0.25m	Semi-friable, mid-greyish brown clayey silt with moderate chalk and flint inclusions		15/01/25
82007	Cut of linear	L: 1m+ W: 1.12m D: 0.35m	Linear aligned N-S, located at W end of TR82. Steep sides with a concave base.		16/01/25

82008	Fill of [82007]	0.35m	Friable light greyish brown, chalky silt/clayey chalk with frequent inclusions of small- medium flint and small chalk stones	Animal bone	16/1/25
-------	--------------------	-------	---	-------------	---------

Trench 83					
General description				Orientation	NW-SE
Blank trench				Length (m)	30m
				Width (m)	1.8m
				Max. Depth	0.5m
				Min Depth	0.4m
Context No.	Type	Depth	Description	Finds	Date
83001	Topsoil	0.3m	Brownish-grey silty clay		16/01/25
83002	Subsoil	0.15m	Greyish brown silty clay		16/01/25
83003	Natural		Orange-white chalk and reddish-brown silty clay with flint inclusions		16/01/25

Trench 84					
General description				Orientation	NW-SE
Blank trench				Length (m)	30m
				Width (m)	1.8m
				Max. Depth	0.5m
				Min Depth	0.4m
Context No.	Type	Depth	Description	Finds	Date
84001	Topsoil	0.3m	Brownish-grey silty clay		15/01/25
84002	Subsoil	0.1m	Greyish brown silty clay		15/01/25
84003	Natural		Orange-white chalk		15/01/25

Trench 85					
General description				Orientation	NE-SW
Blank trench				Length (m)	30m
				Width (m)	1.8m
				Max. Depth	0.5m
				Min Depth	0.5m
Context No.	Type	Depth	Description	Finds	Date
85001	Topsoil	0.3m	Brownish-grey silty clay		15/01/25
85002	Subsoil	0.2m	Greyish brown silty clay		15/01/25
85003	Natural		Orange-white chalk		15/01/25

Trench 86					
General description				Orientation	NE-SW
Blank trench				Length (m)	30m
				Width (m)	1.8m
				Max. Depth	0.5m
				Min Depth	0.5m
Context No.	Type	Depth	Description	Finds	Date
86001	Topsoil	0.3m	Brownish-grey silty clay		15/01/25
86002	Subsoil	0.15m	Greyish brown silty clay		15/01/25
86003	Hillwash		Reddish brown silty clay with frequent flint inclusions		15/01/25

Trench 87					
General description				Orientation	N-S
Blank trench				Length (m)	30m
				Width (m)	1.8m
				Max. Depth	0.5m
				Min Depth	0.5m
Context No.	Type	Depth	Description	Finds	Date
87001	Topsoil	0.3m	Brownish-grey silty clay		15/01/25
87002	Subsoil	0.2m	Greyish brown silty clay		15/01/25
87003	Natural		Orange-white chalk with moderate flint inclusions		15/01/25

Trench 88					
General description				Orientation	N-S
Blank trench				Length (m)	30m
				Width (m)	1.8m
				Max. Depth	0.5m
				Min Depth	0.4m
Context No.	Type	Depth	Description	Finds	Date
88001	Topsoil	0.3m	Brownish-grey silty clay		16/01/25
88002	Subsoil	0.2m	Greyish brown silty clay		16/01/25
88003	Natural		Orange-white chalk and reddish brown clay with flint inclusions		16/01/25

Trench 89					
General description				Orientation	E-W
Blank trench				Length (m)	30m
				Width (m)	1.8m
				Max. Depth	0.5m
				Min Depth	0.4m
Context No.	Type	Depth	Description	Finds	Date
89001	Topsoil	0.3m	Brownish-grey silty clay		16/01/25
89002	Subsoil	0.15m	Greyish brown silty clay		16/01/25
89003	Natural		Reddish orange clay with flint inclusions		16/01/25

Appendix B: Finds assessment

Charlotte Britton

Introduction

This report presents an assessment of the finds (excluding the coin, animal bone and environmental remains) recovered from an archaeological trial trench evaluation at land adjacent to Manor Farm, Monk Sherborne, Tadley, Hampshire (NGR: SU 60821 55166). Excavations recovered c.20.8kg of artefactual material and 146.9g of shell. The artefacts include ceramic building material (hereafter CBM), fired clay, industrial waste, ferrous metalwork, pottery, and natural unmodified material (stone and flint).

Where chronologically diagnostic, the material dated to the Iron Age to Roman period. The assessment includes a discussion of the findings in their regional and chronological context and recommendations for further work.

Methodology

The assessment was carried out between 20th–21st March 2025. The material was recorded and assessed in accordance with national guidelines (Archaeological Ceramic Buildings Materials Group 2002; Barclay *et al.* 2016; Campbell 2017; ClfA 2020; Historic England 2015) and with reference to the South East Research Framework (Kent County Council 2025).

The material was examined visually and was quantified by count and weight, with basic artefact types, mollusc species (shell), pottery wares and dates recorded.

Assessment of the pottery fabrics was carried out using a low power microscope at x30 magnification with basic classification (e.g. reduced ware). Roman fabric codes were assigned with reference to the National Roman Fabric Reference Collection (Tomber and Dore 1998).

CBM form classifications broadly follow those in McComish (2015), and iron nail classifications follow those in Manby (2024), with classifications of these and additional Romano-British metalwork also referring to established typologies (Manning 1985).

Outline of the assemblage

The finds assemblage dated from the late Iron Age to Roman period, with the shell, fired clay, industrial waste and burnt flint being entirely chronologically undiagnostic (Table B1). An archive catalogue of the material was produced in a pro forma excel spreadsheet for inclusion in the Site archive.

Table B1: Material recovered by Trench and context, with object type, date range, count and weight.

Trench	Context	Material	Object type	Date range	Count	Weight (g)
0	0	Industrial waste	Slag	Unknown	1	123.2
12	12006	Flint	Worked?	Unknown	1	31.4
16	16009	CBM	Imbrex	Roman	3	328
			Imbrex?	Roman	1	37.8
			Tegula	Roman	2	290.9
			Tegula?	Roman	1	96.3
			Tile	Roman	15	1009.9
			Undiagnostic	Unknown	5	61.2
		Pottery	Black-burnished ware 1	Roman	2	20
			Black-burnished ware 2	Roman	1	4.9
			Hand-built	PRIA-ROM	5	186.3
			Oxidised ware	Roman	2	12
			Reduced ware	Roman	14	115.2
			Samian ware	Roman	2	36.9
			White ware	Roman	1	6
		Stone	Natural	N/A	1	31.7
17	17006	CBM	Imbrex?	Roman	3	345.4
			Tile	Roman	1	224.2
		Fe Iron	Hobnail	Roman	31	26.2
		Flint	Natural	N/A	196	1876
		Shell	Terrestrial snail	Unknown	251	61.4
18	18005	CBM	Tile	Roman	3	308
			Undiagnostic	Unknown	6	53.4
		Pottery	Black-burnished ware 2	Roman	1	4.1
			Hand-built	PRIA-ROM	1	17.5
19	19005	CBM	Parietalis	Roman	1	135.6
			Tegula	Roman	1	207.6
			Tile	Roman	6	325.7
			Tile?	Roman	1	161.9
		Stone	Head-affected?	Unknown	1	164.8
20	20005	Flint	Burnt	Unknown	4	88
	20010	Pottery	Hand-built	PRIA-ROM	15	332.2
			Oxidised ware	Roman	7	78.7
			Oxidised ware?	Roman	2	14.8
			Oxidised white slipped ware	Roman	1	2.7
			White ware	Roman	1	26.3
		Shell	Oyster	Unknown	1	23.4
	20011	Flint	Natural	N/A	47	1092
		Pottery	Black Samian	Roman	2	112.9
			Hand-built	PRIA-ROM	8	94.6

Trench	Context	Material	Object type	Date range	Count	Weight (g)
			Oxidised ware?	Roman?	3	1.9
		Shell	Terrestrial snail	Unknown	8	0
		CBM	Tegula	Roman	1	296.7
		CBM	Tile	Roman	4	492.8
		Stone	Natural	N/A	1	527
	20020	CBM	Tile	Roman	1	91
		Pottery	Reduced ware	Roman	1	7.5
21	21006	CBM	Tegula	Roman	2	309.4
			Tile	Roman	1	31.4
			Undiagnostic	Roman	2	115.5
		Pottery	Reduced ware	Roman	1	17.1
	21008	Pottery	Black-burnished ware 2	Roman	3	19.5
	21010	Fe Iron	Nail	Roman?	1	7.1
		Pottery	Hand-built	PRIA-ROM	1	80
			Oxidised ware	Roman	1	7.6
	21012	Fe Iron	Cleat	Roman	1	3.7
		Pottery	Black-burnished ware 1	Roman	1	6.8
			Black-burnished ware 2	Roman	2	21.4
			Oxidised ware	Roman	1	7.5
			Reduced ware	Roman	1	6.9
22	22006	Flint	Burnt	Unknown	12	816
		Industrial waste	Slag	Unknown	1	381
		Pottery	Hand-built	PRIA-ROM	5	141.3
			Oxidised ware	Roman	6	22
			Reduced ware	Roman	1	4.3
		Shell	Oyster	Unknown	4	51.5
	22010	Pottery	Black-burnished ware 1	Roman	2	24.3
			Hand-built	PRIA-ROM	19	160
			Reduced ware	Roman	5	47.9
23	23005	Pottery	Hand-built	PRIA-ROM	2	51.6
			Oxidised ware	Roman	1	12.1
			Reduced ware	Roman	1	40
	23006	Fired Clay	Undiagnostic	Unknown	1	6.2
		Flint	Burnt	Unknown	1	14
		Pottery	Hand-built	PRIA-ROM	1	2.9
	23008	Flint	Burnt	Unknown	3	12.5
		Pottery	Hand-built	PRIA-ROM	3	10
		Stone	Natural	Unknown	1	18.9
	23010	Pottery	Hand-built	PRIA-ROM	22	254.5
24	24014	Flint	Natural	N/A	280	2838
		Industrial waste	Slag	Unknown	8	116.2
		Shell	Terrestrial snail	Unknown	20	9.3
	24016	CBM	Imbrex?	Roman	1	227.4

Trench	Context	Material	Object type	Date range	Count	Weight (g)
			Tegula	Roman	1	375
			Tile	Roman	2	170.5
			Undiagnostic	Roman?	2	5.5
29	29011	Flint	Burnt	Unknown	4	512
		Pottery	Hand-built	PRIA-ROM	1	40.6
	29014	Flint	Natural	N/A	54	470
		Shell	Terrestrial snail	Unknown	19	1.3
	29015	Flint	Natural	N/A	15	218
	29016	Flint	Burnt	Unknown	4	796
			Natural	N/A	41	1094
		Industrial waste	Slag	Unknown	2	173.4
		Pottery	Reduced ware?	Roman?	3	23.5
30	30011	Pottery	Hand-built	PRIA-ROM	1	9.5
75	75005	Flint	Natural	N/A	142	1332
		Pottery	Hand-built	PRIA-ROM	1	24.2
77	0	CBM	Tile	Unknown	2	55.7
			Undiagnostic	Unknown	1	2.2
Total					1380	207.85

Key: PRIA-ROM; pre-Roman Iron Age-Roman

Shell

An assemblage of 303 fragments (146.9g) of shell were recovered from across the Site, with 186 fragments being recovered from soil samples and the remaining being hand collected. It included marine and terrestrial examples with the former including oyster. Five fragments were recovered deriving from *Ostrea edulis Linnaeus* (British Native Oyster/European Flat Oyster) and although no shuck marks were recorded the material likely represented subsistence patterns of those living around the Site, although were chronologically undiagnostic.

The remainder of the shell assemblage encompassed terrestrial snails including examples of *Cepaea nemoralis* (Brown lipped snail), *Cepaea hortensis* (White lipped snail), probable *Pomatias elegans* (Round mouthed snail) and additional unidentifiable examples. All were species native to Britain and indicative of various habitats, with the *Pomatias elegans* being specifically associated with areas of high levels of calcium carbonate such as limestone or chalk rock. It was probable that the remains of terrestrial molluscs were representative of intrusive local fauna. All examples were chronologically undiagnostic.

CBM and fired clay

An assemblage of 69 fragments (5,759g) of CBM and one fragment (6.2g) of fired clay were recovered from across the Site, with most dating to the Roman period.

Where diagnostic, the CBM assemblage consisted of roofing material and included *tegulae* and *imbrices* that always displayed oxidised fabrics. Eight fragments of *tegulae* were recovered that displayed characteristic flanges consistently measuring between 44–52mm at full height. Eight fragments of *imbrex* tiles were also recovered that usually measured c.17mm in height. The two were often recovered contemporaneously indicating that they derived from the same suite of material i.e. from the same roof.

A further 36 fragments of tile were also recovered that had similar oxidised fabrics to those discussed above, displayed obvious basal surfaces and measured between 13.8–54mm in height. It was therefore probable that they represented additional *tegula* and *imbrex* fragments although were too fragmented to be more securely identified. Some fragments had evidence of mortar adhered to the surfaces suggesting use. One example, recovered from linear feature upper fill 16009 also displayed graffiti on the upper surface in the form of a spiral-like decoration made by finger impressions.

Also included in the CBM assemblage was a single fragment (135.6g) of a probable *parietalis* or wall tile. It displayed characteristic keying on one side (McComish 2015, 16) and measured 29.5mm in height.

The remainder of the CBM assemblage (16 fragments, 237.8g) was recovered from across the Site and was undiagnostic in form and date. The fragments were always in oxidised fabrics, and probably represented additional Roman material, worn to state where forms could not be identified.

It was probable that all the material was produced in the local region, with the south-east being prolific in tile production during the Roman period (Allen *et al.* 2019, 24–26).

Fired clay

A single fragment of fired clay (6.2g) was recovered from linear feature upper fill 23006. It displayed an oxidised fabric with reduced to black surface although was undiagnostic. This made it difficult to distinguish between deliberate or accidental firing. It was clear from the fabric colour and lack of vitrification that the clay had not been subject to extremely high temperatures, and so may have derived from a domestic hearth, oven or other similar process, rather than an industrial structure such as a kiln or furnace. It is also possible that it represented a ceramic object such as hand-built pottery that had been abraded to a state where form was no longer identifiable. It was chronologically undiagnostic.

Pottery

An assemblage of 154 sherds (2,110g) of pottery was recovered from across the Site, which dated from the late Iron Age to Roman period (Table B2 and B3). The assemblage included material that was British in origin, as well as material that may have been produced on the continent during the Roman period. The wares identified were characteristic of the south of England in both periods. The assemblage was recovered mostly from secure contexts although was often fragmentary and abraded, with the mean sherd

weight for the entire assemblage being 14g. This suggested the assemblage may have been subject to disturbance, and/or poor soil conditions (Evans 2024). The material included hand-built wares, coarse wares and finewares and was representative of a minimum of 54 individual vessels.

Table B2: Pottery types recovered with count and weight.

Pottery type	Count	Weight (g)
Coarse ware	62	553.1
Coarse ware?	3	1.9
Fineware	4	149.8
Hand-built	85	1405.2
Total	154	2110

Iron Age to Roman

The largest component of the pottery assemblage was represented by 85 sherds (1,405.2g) of hand-built material, constituting 55% of the assemblage by count (67% by weight). It consisted entirely of probably locally produced hand-built vessels, being typical of the regional Iron Age and Romano-British tradition. The assemblage included variations of sandy hand-built fabrics that were usually brown-black in colour and were usually flint tempered, as well as some having additional quartz, rock and ferrous inclusions.

Although fragmentary, some forms could be identified representing solely jars. They were always open barrel shaped jars with small rims, being similar to 'saucepan pots' indicative of southern England during the late Iron Age onwards (300 BC+) (Gibson 2012, 120-121, no.1; fig.58, 121). The forms and fabrics of these jars were consistent, indicating that all the vessels probably belonged to a single suite of material. Decoration was limited to horizontal grooves, with one example possibly also displaying diagonal grooves on the outside body, below the rim.

It is now widely accepted that hand-built vessels were being produced and used alongside wheel-made counterparts during the Iron Age and Roman periods (Evans 2024), therefore the examples recovered by the current evaluation have been ascribed a broad date range. Some of the hand-built pottery was recovered alongside wheel-made Roman coarse wares, suggesting the former may have dated to the Roman period. Some of the assemblage, however, recovered from contexts in Trenches 23, 30 and 73 was present in isolation from Roman material, possibly indicating that the hand-built wares dated more securely to the late Iron Age, being representative of such a community situated on the Site.

Roman

Roman coarse wares made up 42% of the pottery assemblage by count (26% by weight) and probably consisted mostly of locally produced examples. The assemblage primarily included oxidised and reduced wares (grey wares). These were not assigned national fabric codes, but the types are common on Roman

sites in the region. When identifiable, forms consisted of everted rim jars and a possible bowl/dish, although the material was very fragmentary.

Also included in the coarse ware assemblage were 12 sherds (101g) of Black-burnished ware including three examples of Black-burnished ware 1 types, that may have represented regional imports, having most likely been produced in Dorset, where they were manufactured throughout the Roman period (e.g. DOR BB1 Tomber and Dore 1998, 127). The remainder of the material consisted of Black-burnished ware 2 types (BB2), that were common to the area, with the BB2 industry being prolific in the south-east, until around AD300 (Allen *et al.* 2019, 23). Fragment sizes were often limited, and so forms could not be identified.

Two sherds (32.3g) of white ware were also recovered and although highly abraded, at least one may have been representative of material produced in the local region during the late Roman period (OVW WH Tomber and Dore 1998, 146).

Four sherds (149.8g) of fineware were recovered deriving from two individual vessels, taking the form of Samian ware. One example, recovered from linear feature upper fill 16009, likely derived from a bowl and displayed a partial stamp reading 'M·I' although could not be further identified. The other example, recovered from linear feature fill 20011 was representative of black Samian, probably deriving from a wide dish, plate or similar vessel. A partial stamp was also visible on the inside body of this example although was not legible. Samian was mostly produced in Gaul during the Roman period; however, the local south-east area was also known Samian ware production during this time (Webster 1996, 100; Allen *et al.* 2019, 23) and so it is possible that the fineware represents locally produced material; although only further investigation of the material by an appropriate specialist could confirm or refute this.

The Roman pottery was recovered entirely from linear features, ditch or pit fills and so probably represented secure contexts, helping to date the features and Trenches it was recovered from.

Table B3: Pottery wares recovered by context, with date range, count and weight.

Context	Ware	Date Range	Count	Weight (g)
12008	Black-burnished ware 2	Roman	1	12.4
16009	Black-burnished ware 1	Roman	2	20
	Black-burnished ware 2	Roman	1	4.9
	Hand-built	PRIA-ROM	5	186.3
	Oxidised ware	Roman	2	12
	Reduced ware	Roman	14	115.2
	Samian ware	Roman	2	36.9
	White ware	Roman	1	6
	sub-total		27	381.3
18005	Black-burnished ware 2	Roman	1	4.1
	Hand-built	PRIA-ROM	1	17.5

Context	Ware	Date Range	Count	Weight (g)
	sub-total		2	21.6
20010	Hand-built	PRIA-ROM	14	322.9
	Oxidised ware	Roman	7	78.7
	Oxidised ware?	Roman?	2	14.8
	Oxidised white slipped ware	Roman	1	2.7
	White ware	Roman	1	26.3
	sub-total		25	445.4
20010	Hand-built	PRIA-ROM	1	9.3
20011	Black Samian	Roman	2	112.9
	Hand-built	PRIA-ROM	8	94.6
	Oxidised ware?	Roman?	3	1.9
	sub-total		13	209.4
20020	Reduced ware	Roman	1	7.5
21006	Reduced ware	Roman	1	17.1
21008	Black-burnished ware 2	Roman	2	7.1
21010	Hand-built	PRIA-ROM	1	80
	Oxidised ware	Roman	1	7.6
	sub-total		2	87.6
21012	Black-burnished ware 1	Roman	1	6.8
	Black-burnished ware 2	Roman	2	21.4
	Oxidised ware	Roman	1	7.5
	Reduced ware	Roman	1	6.9
	sub-total		5	42.6
22006	Hand-built	PRIA-ROM	5	141.3
	Oxidised ware	Roman	6	22
	Reduced ware	Roman	1	4.3
	sub-total		12	167.6
22010	Black-burnished ware 1	Roman	2	24.3
	Hand-built	PRIA-ROM	19	160
	Reduced ware	Roman	5	47.9
	sub-total		26	232.2
23005	Hand-built	PRIA-ROM	2	51.6
	Oxidised ware	Roman	1	12.1
	Reduced ware	Roman	1	40
	sub-total		4	103.7
23006	Hand-built	PRIA-ROM	1	2.9
23008	Hand-built	PRIA-ROM	3	10
23010	Hand-built	PRIA-ROM	22	254.5
29011	Hand-built	PRIA-ROM	1	40.6
29016	Reduced ware?	Roman?	3	23.5
30011	Hand-built	PRIA-ROM	1	9.5
75005	Hand-built	PRIA-ROM	1	24.2
Total			154	2110

Key: PRIA-ROM; pre-Roman Iron Age-Roman

Ferrous metalwork

An assemblage of 33 fragments (37g) of iron was recovered including a nail, hobnails and a cleat.

The nail was recovered from linear feature fill 21010 and was straight, measuring 44.9mm in length, with a square shank, sub-rectangular head and possible flat tip. The head was bent upwards along one side and down on the opposite side, indicating use. It fit within Manby's 'general nail' classification (Manby 2024) indicating it had varied general usage. It also fit well within Manning's typology (1b Manning 1985, 133-134) suggesting that it probably dated to the Roman period.

A total of 31 hobnail fragments (26.2g) were recovered from linear feature fill 17006, and when identifiable, they had round domed heads and short stems, fitting into Manning's Type 10 nails (Manning 1985, 133-135, no.10; fig.32, 133). This dated the hobnails to the Roman period, being characteristic of examples recovered from sandals and boots dating to the period. Most examples were clenched/curved when complete, indicating use.

Finally, a single iron cleat (3.7g) was recovered from linear feature fill 21012. It had an oval body and two complete tangs, measuring c.27mm in length. It fit well into Manning's established typology (Manning 1985, 131, no. R60-61; Plate 61) dating it to the Roman period, with this type also often being associated with the soles or heels of boots dating to the period.

Industrial waste

Twelve fragments (793.8g) of industrial waste were recovered from Trenches 22, 24 and 29 in the form of ferrous slag that was indicative of ironworking, although was chronologically undiagnostic. A couple of examples had mortar adhered to the surfaces suggesting that they may have been reused or redistributed during a building phase, although whether intentionally or not cannot be ascertained.

Stone and flint

A single fragment of stone (527g) was recovered from Trench 12 that represented natural unmodified material.

In addition, an assemblage of 804 fragments (c.11kg) of flint was recovered from across the Site, with 77 fragments being recovered from soil sampling. Most of the assemblage (775 fragments, 8,920g) represented natural unmodified material. One fragment (31.4g) recovered from linear feature upper fill 12006 may have represented worked material, although was unusual.

The remainder of the assemblage (28 fragments, 2,238.5g) was recovered from potentially secure layers and represented burnt unworked flint. Such material could have been created by accidental burning at any point in the past but may have also be associated with cremations, hearths and/or kilns, with larger pieces possibly being used as pot boilers or hot stones (Shepherd 1972, 173-174; 177-178). In context 29016, the burnt unworked flint was recovered alongside unburnt naturally fractured material indicating burning may have occurred prior to deposition. The remainder of the material was found in isolation, possibly suggesting burning had taken place in situ at some point in the past, with such activity being represented in Trenches 20, 22, 23 and 29.

Statement of potential

The finds assemblage was associated with the storage, preparation and consumption of foodstuffs, as well as buildings and personal adornment (shoes - iron) during the late Iron Age to Roman period. Possible ironworking and additional high temperature activities (burnt flint) were also implied at some point in the past, and potential subsistence patterns were represented by oyster remains.

Late Iron Age to Roman period

The late Iron Age to Roman pottery assemblage included hand-built, coarse- and fine- wares that dated throughout the period; with most of the material potentially having been produced in the local region (oxidised and reduced wares and BB2), a small amount representing nationally traded wares (e.g. Black-burnished ware 1), and some representing potential international imports (Samian ware). There was material that dated to the late Iron Age to Roman period (hand-built wares), material that dated more securely to the Roman period (reduced, oxidised and Black-burnished ware 1), as well as examples that dated to the early-middle of the Roman period (Black-burnished ware 2) and some that potentially dated to the late Roman period (white ware). This may therefore indicate that the Site at Monk Sherborne may have seen occupation throughout the late Iron Age and Roman periods. The pottery recovered represented domestic activity, with vessels for the cooking and storage of food (jars), as well as vessels for food consumption i.e., table ware (fine wares). Although a small assemblage, it should be noted that no mortaria or amphora were identified, perhaps suggesting that food preparation and storage was not a common feature of the community it derived from, although this may be due to lack of recovery. However, while the pottery assemblage was limited the presence of regionally produced wares, such as the BB2, oxidised and reduced wares, alongside nationally traded wares (BB1) and possible internationally produced wares (Samian ware), would suggest that the Site was part of a network of trade and interaction with wider Roman Britain, especially southern England, with access to continental imports.

The CBM recovered was mostly representative of roofing material, although a single wall tile was also represented. Most was probably recovered from secure contexts, suggesting buildings were situated on or around the immediate Site during the Roman period. Finally, hobnails and a cleat were recovered from

features in Trenches 17 and 21 being representative of footwear of the Roman period further suggesting activity had taken place on the Site during this period.

The late Iron Age to Roman period material was recovered from Trenches 12, 16-24, 29-30 and 75 indicating that these areas were loci of activity throughout the periods probably being connected to settlement(s) previously identified on and around the Site (AOC 2024, 3-4).

Further work could include more secure identification of the fabrics and forms recovered within the pottery assemblage, as well as further investigation into the Samian stamp recorded to identify a specific source of the products. This and a detailed comparison with other sites within Hampshire could help to fully define the character of the settlement, establish exactly where and when most of the pottery was produced, and contribute to local Romano-British pottery studies by informing on local trends, as well as providing tighter dates for the features excavated and the occupation of the Site.

Undiagnostic

Shell, CBM, fired clay, industrial waste and burnt flint were also present in the assemblage, all of which were chronologically undiagnostic. Those items recovered from unstratified, or unsecure contexts have no archaeological potential. The material recovered from contexts that are demonstrably late Iron Age-Roman in date may have potential to provide additional detail as part of a larger assemblage. It is possible that the industrial waste and burnt flint recovered is representative of high temperature activities taking place in Trenches 20, 22-24 and 29 at some point in the past, however it was also possible that a lot of the assemblage represented intrusive material representing ironworking, buildings and possible subsistence patterns from the wider area rather than the immediate Site.

Conclusions and recommendations

The finds recovered during trial trench evaluation Monk Sherborne have demonstrated late Iron Age to Roman period activity at the Site. A significant proportion of the material was probably recovered from secure contexts, providing evidence for the chronology and character of features excavated. This material (particularly the pottery) should be retained and reconsidered as part of any larger finds assemblage resulting from any additional work undertaken as part of the development. This should include full analysis of all the material considered within site-wide stratigraphic relationships to help in refining site chronologies, inform on site function and status, and contribute further to local pottery studies. In addition, it is also recommended that the Samian stamp is further identified.

Further analysis of the residual and chronologically undiagnostic material would not helpfully contribute to our understanding of the Site, or research objectives or the agenda set out in the South East Research Framework (Kent County Council 2025). No further work could be meaningfully undertaken on this component of the assemblage, and it may be discarded on completion of the project.

This report and associated data spreadsheet should be retained as part of the site archive and integrated into any site-wide grey literature or publication reporting.

References

- Allen, M., Bird, D. and Croxford, B. (2019). *South East Research Framework Resource Assessment and Research Agenda for the Roman period*. Available at: https://www.kent.gov.uk/_data/assets/pdf_file/0007/99304/The-Roman-Period-Chapter.pdf accessed on 20.03.25.
- Archaeological Ceramic Building Materials Group (2002). *Minimum Standards for Recovery, Curation, Analysis, and Publication for Ceramic Building Material* (Draft Minimum Standards, 2002).
- Barclay, A., Knight, D., Booth, P., Evans, J., Brown, D. and Wood, I. (2016). *A Standard for Pottery Studies in Archaeology*. Prehistoric Ceramics Research Group, Study Group for Roman Pottery & Medieval Pottery Research Group.
- Campbell, G. (2017). Chapter 16. The Collection, processing and curation of archaeological marine shells in Allen, M. J. (ed). *Molluscs in Archaeology: methods, approaches and applications*. Studying Scientific Archaeology No. 3. Oxbow. Oxford.273–88.
- Chartered Institute for Archaeologists (CIfA). (2020). *Standard and guidance for the collection, documentation, conservation, and research of archaeological materials*.
- Evans, C. (2024). *Late Iron Age and Roman Resource Assessment*. Available at: <https://researchframeworks.org/eoe/resource-assessments/late-iron-age-and-roman/#section-12> accessed on 20.03.25.
- Gibson, A. (2012). *Prehistoric Pottery in Britain and Ireland*. The History Press. Gloucestershire.
- Historic England (2015). *Archaeometallurgy. Guidelines for Best Practice*. Historic England.
- Kent County Council (2025). *South East Research Framework*. Available at: <https://www.kent.gov.uk/leisure-and-community/history-and-heritage/south-east-research-framework> accessed on 20.03.25.

- Manby, K. J. B. (2024). *How do you solve a problem like nails? A new, multi-period methodology and typology for recording iron nails*. Available at: <https://onlinelibrary.wiley.com/doi/full/10.1111/ojoa.12291> accessed on 20.03.25.
- Manning, W.H. (1985) *Catalogue of Romano-British Iron Tools, Fittings and Weapons in the British Museum*.
- McComish, J. M. (2015). *A Guide to Ceramic Building Materials*. York Archaeological Trust for Excavation and Research Limited. Report 2015/36.
- Shepherd, W. (1972) *Flint: Its Origin, Properties and Uses*. Faber & Faber.
- Tomber, R. and Dore, J. (1998). *The National Roman Fabric Reference Collection*. MoLAS Monograph 2. London.
- Webster, P. (1996). *Roman Samian Pottery in Britain*. Practical Handbook in Archaeology 13. Council for British Archaeology. York.

Appendix C: Coin assessment

Richard Brickstock

Introduction

The excavations at Monk Sherborne produced a single Roman coin from context 17006 in Trench 17.

Methodology

The coin was assessed by eye by the author in March 2025. The coin was in good condition and required no cleaning or conservation to enable a full assessment.

Outline of the assemblage

The coin is an *antoninianus* (double denarius) of Tetricus I, conventionally dated to AD 270-73 though the latest edition of RIC suggests a mint date in early AD 274:

Obverse: IMPC TETRICVS PF AVG

Reverse: SALVS AVG Salus standing left holding patera and anchor, feeding snake rising from altar.

Diameter: 19 mm Weight: 1.9 g Die-axis: 12 Condition: UW/UW

Catalogue references: RIC 126; RIC ed. 2, 822-3/827-8

This is a common type, part of a series of very common coins some of which continued in circulation for many years. This example, however, exhibits little of no sign of circulation wear and was thus, in all probability, deposited sometime in the mid-AD 270s. A radiate of Tetricus I was recovered during previous excavations at Manor Farm (Teague 2005).

Statement of potential and recommendations

The coin should be retained and deposited as part of the project archive.

Appendix D: Animal bone assessment

Dr Clare Rainsford

Introduction

A small assemblage of 445 fragments (3.6kg) of faunal bone was recovered from excavations at Monk Sherborne, near Basingstoke, Hampshire. The assemblage was recovered primarily via hand-collection, with minimal further animal bone recovered from two environmental samples. The assemblage appears to derive primarily from ditch and pit features dating to the Iron Age and Roman periods, although provisional dating is unavailable for most of the features at the Site. Bone was recovered from 12 trenches across the Monk Sherborne pre-construction footprint. The assemblage has been assessed in full.

Methodology

Following Historic England guidance for assessment (Baker & Worley 2014), material was recorded by context. For each context, the overall quantity, number of identified specimens (NISP/ID), number of species attributable to size class, and number of unidentified specimens were recorded. The general condition of each context was rated on a five-point scale (good to poor), which covers natural taphonomic and diagenetic degradation; and degree of fragmentation was also recorded on a five-point scale (A-C). Colouration of the assemblage and any evident mineral accretions were noted separately; and evidence of butchery, carnivore / rodent gnawing, and bone fragments showing appreciable evidence of burning (>50% of bone burnt) were also noted.

All mammalian taxa were identified to species where possible, and numbers of identified, ageable and measurable specimens were recorded for each context. Sheep and goats were recorded as a single category, considering the well-known difficulties of distinguishing between these two species (Zeder & Lapham 2010). Ageable specimens are divided into two categories: mandibles (which include at minimum one ageable molar or premolar) and postcranial elements with one or more epiphyses showing state of fusion. Neonatal or young juvenile elements were noted where present. Measurable specimens are defined as those identified fragments where at least 1-2 measurements can be taken, based on von den Driesch (1976). Bird and fish remains were not identified to species level. For the birds, only chicken and goose bones were identified to species, with the remaining bird bones recorded as either identifiable ("Bird ID") or unidentifiable ("Bird Unid").

Both hand-collected bone and bone recovered via environmental sampling were recorded following the above protocol. In addition, the weight of bone recovered via environmental sampling for each context was recorded.

Data are stored as Excel spreadsheets (.xlsx). All bone was identified with reference to standard reference literature (Schmid 1972, Pales & Lambert 1971, Hillson 2005, Johnson 2015, 2016).

Outline of the assemblage

A total of 445 fragments of faunal bone were recovered from excavations at Monk Sherborne, of which 410 fragments (3.6kg) were recovered via hand-collection and 35 fragments (13g) were recovered from two environmental samples (Table D1). The assemblage derived from features across twelve trenches across the Monk Sherborne pre-construction footprint. These trenches typically contained one or two features which yielded less than 50 fragments of faunal bone, with the exception of trench 20, where the fill of a ditch terminus (20011) and a single pit fill (20010) yielded 260 fragments of bone from both hand-collection and environmental samples. In total, 57 fragments from the Monk Sherborne assemblage were considered identifiable to species (14% of assemblage), and a further 81 were considered identifiable to size class (20%).

The condition of faunal bone from the Monk Sherborne assemblage was notably poor (Table D2). Severe degradation of bone surfaces was noted throughout, including on the better-preserved contexts within the assemblage, with the worst-preserved material showing pitting over most of the bone surface, thinning of cortical bone, and degradation of teeth. The assemblage showed mostly moderate to heavy fragmentation (Table D3), although in some contexts large mammal bones survived relatively complete, despite the poor surfaces. Monk Sherborne is located on a chalk substrate, and the condition of the assemblage is consistent with heavy leaching of minerals on shallow and well-drained alkaline soils.

The assemblage from Monk Sherborne was dominated by domestic taxa, with cattle remains comprising over half of the identified material (30 fragments out of 57), and sheep/goat, pig, horse, and dog also present (Table D4). Large mammal remains were almost three times more frequent than medium mammal in the fraction of the assemblage identified to size class (59 fragments vs. 22 fragments). In addition, a single micromammal (c.f. mouse or vole) scapula was recovered from sample 6, context 29014 (lower fill of large pit). It is unlikely that the predominance of large mammal is a result of preservation conditions, and is likely to reflect genuine depositional practices.

Dog remains derive primarily from context 20011, which yielded a single fragmented dog skull (5 fragments identifiable). One horse mandible, also recovered from context 20011, was noted to have a relatively extensive lesion of periosteal bone growth on the buccal surface of the jaw, below the gum line; this could be indicative of periostitis as a result of infection, but breakage on the mandible means the full extent of the lesion cannot be seen and the cause of this pathology is uncertain (Figure D1).

Evidence of carnivore gnawing was noted on bones within two contexts (20011 and 22006). The only evidence of butchery within the assemblage was a series of knife marks to the base of a cattle astragalus

(context 29016), although the very substantial degradation of surfaces is likely to have impacted the visibility of other butchery marks.

Statement of potential

The small size and poor preservation condition of the Monk Sherborne assemblage limits the further potential of the material. A small amount of age data can be retrieved from the cattle (1 mandible and 9 preserved epiphyseal fusion points), along with a single ageable pig mandible (Table D5). Minimal biometric information is retrievable from the assemblage, with three cattle post-cranial bones and two dog cranial elements / teeth considered measurable (Table D5). The poor condition of the material also limits the possibility of biomolecular sampling, although a single dog petrous bone is present.

Conclusions and recommendations

The assemblage from Monk Sherborne is small and poorly preserved, and substantially domestic in character. The 445 recovered fragments derive from ditch and pit fills occurring across a number of trenches, most of which are currently undated, with the only substantial collection of bone deriving from a ditch terminus fill in trench 20 (context 20011). There is relatively little further information considered recoverable from the assemblage, and it is unlikely that the assemblage can provide substantial further information about human-animal interactions at the Site.

The Monk Sherborne excavations were sited adjacent to previous excavations carried out at Manor Farm, Monk Sherborne, which found substantial evidence for both Iron Age features and for a 4th century Roman villa (Teague 2005). The bone assemblage from this site was considerably larger than the one from the current excavations (c.1250 fragments of identifiable bone (Ingrem 2005) compared to 57), and derived primarily from two Romano-British pits, which were interpreted potentially as structured or "special" deposits. Depending on the eventual dating of features from the current excavations, the assemblage from Monk Sherborne may form a small and restricted comparanda to this much larger assemblage. The two assemblages appear to be relatively similar in composition and features, which may imply a consistency in animal use across the wider area if they date to the Iron Age or Romano-British period.

No further work is currently recommended on the Monk Sherborne assemblage. Two elements of human neonatal bone were identified in the animal bone assemblage from context 22009. This should be submitted to a human osteologist for analysis when circumstances allow.

References

Baker, P. & Worley, F. 2014. *Animal Bones and Archaeology: Guidelines for Best Practice*. Historic England.

Hillson, S. 2005. *Teeth*. Cambridge: Cambridge University Press.

Ingrem, C. 2005. Faunal Remains. In Teague, S. (2005) *Manor Farm, Monk Sherborne, Hampshire: Archaeological Investigations in 1996*. Proceedings of Hampshire Field Club Archaeology Society 60: 64-135.

Johnson, E. 2015. A skeletal comparison of Dog, Fox, Badger and Cat. [Blog] I feel it in my bones. Available at: <https://ifeelitinmybones.wordpress.com/2015/09/24/a-skeletal-comparison-of-dog-fox-badger-and-cat/> [Accessed 12 March 2019].

Johnson, E. 2016. A skeletal comparison of selected small mammals. [Blog] I feel it in my bones. Available at: <https://ifeelitinmybones.wordpress.com/2016/01/12/small-mammal-skeletal-comparison/> [Accessed 12 March 2019].

Pales, L. & Lambert, C. 1971. *Atlas ostéologique pour servir à l'identification des mammifères du quaternaire*. Paris: CNRS.

Schmid, E. 1972. *Atlas of Animal Bones for Prehistorians, Archaeologists, and Quaternary Geologists*. London: Elsevier.

Teague, S. (2005) *Manor Farm, Monk Sherborne, Hampshire: Archaeological Investigations in 1996*. Proceedings of Hampshire Field Club Archaeology Society 60: 64-135.

Von den Driesch, A. 1976. A guide to the measurement of bones from archaeological sites. Harvard: Peabody Museum Bulletin 1.

Zeder, M. and Lapham, H. 2010. Assessing the reliability of criteria used to identify postcranial bones in sheep, *ovis*, and goats, *capra*. *Journal of Archaeological Science*. 37: 2887-2905

Tables

Table D1: Quantity of faunal bone recovered by trench from Monk Sherborne, Hampshire.

Trench	Quantity	
	hand-collected	sample
6	8	
12	11	

Trench	Quantity	
	hand-collected	sample
16	53	
17	31	
20	227	33
21	8	
22	40	
23	4	
24	2	
29	10	2
30	4	
82	12	
Total	410	35

Table D2: Condition of bone recovered from Monk Sherborne, Hampshire. All numbers given are fragment counts.

	good	good/reasonable	reasonable	reasonable/poor	poor
Total				204	206

Table D3: Degree of fragmentation of faunal bone recovered from Monk Sherborne, Hampshire, where A = mostly complete and C = heavily fragmented. All numbers given are fragment counts.

	A	A/B	B	B/C	C
Total		3	79	198	130

Table D4: Species representation from Monk Sherborne, Hampshire.

	hand-collected	sample
horse	4	
cattle	30	
sheep/goat	10	
pig	7	
dog	6	
mouse/vole		1
large mammal	59	
medium mammal	22	

Table D5: Further potential of faunal remains from Monk Sherborne for measurement (biometric) and age-at-death analysis.

	biometric	ageing	
		mandible	fusion
cattle	3	1	9
pig		1	1
dog	2		

Figures

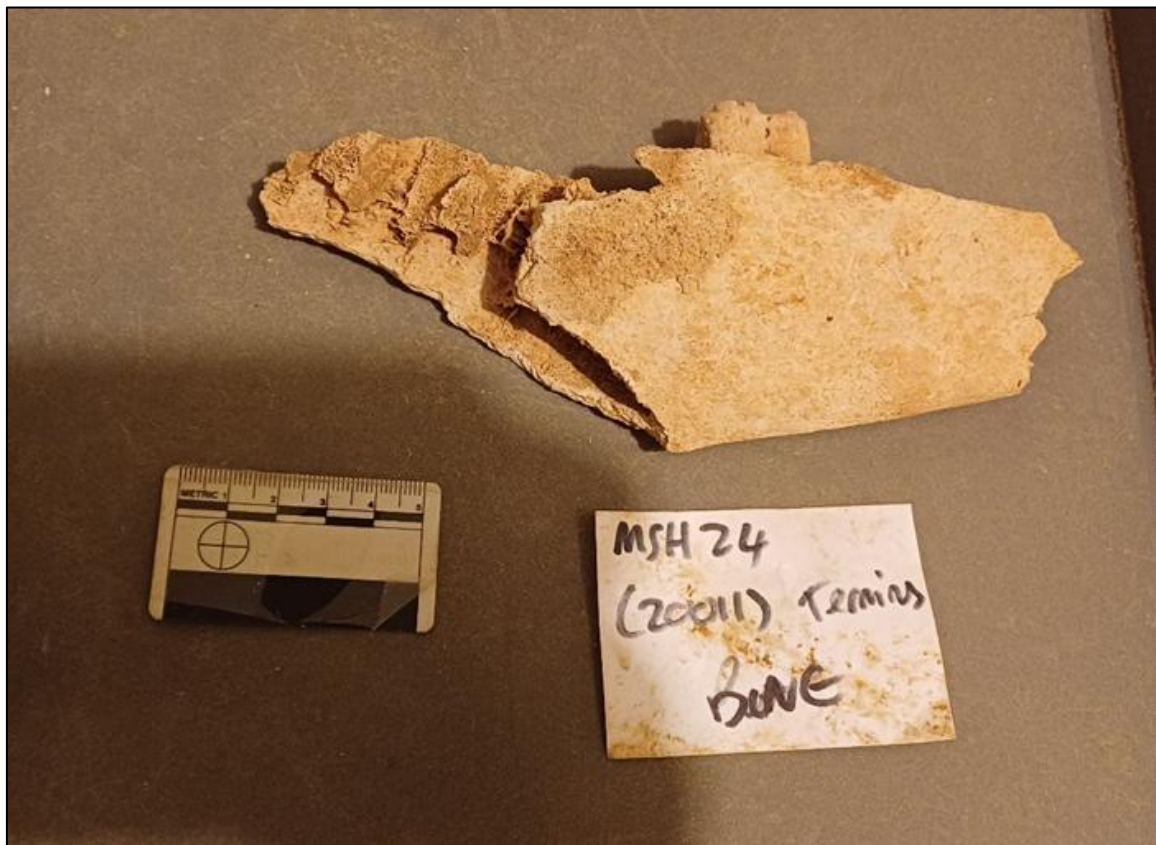


Figure D1: Horse mandible from context 20011, Monk Sherborne, showing area of periosteal bone growth below the remaining in-situ tooth.

Appendix E: Environmental assessment

Lisa Gray MSc MA ACIfA

Introduction

These samples were taken during a trial trench evaluation on land at adjacent to Manor Farm and Weybrook Park Golf Club, Rookery Fram Lane, Monk Sherbourne, Tadley, Hampshire (NGR SU 60821 55166), hereafter referred to as 'the Site'. This evaluation took place on land that had been farmland. No previous archaeobotanical investigations appear to have been carried out at or near the Site (Capon 2024, 2). This report will assess the potential of these archaeobotanical remains to answer this aim, their significance and make recommendations for further work if appropriate.

Methodology

Sampling was undertaken by Rocket Environmental staff, and processing was carried out by Cura Terrae archaeologists. Flotation was carried out by flotation device with flot collected in a 250-300 micron mesh sieve and residue collected in a 1mm mesh sieve. Sample size ranged from 5 to 20 litres.

The samples were assessed using the standard methodology outlined in the Historic England Guidelines for Environmental Archaeology (Campbell *et al.* 2011). Each flot was fully scanned under a stereomicroscope with magnification of 10-45x.

At assessment level the abundance of plant macro-remains is estimated unless the number of items is few (less than ten). The diversity of plant taxon types is also estimated. Level of preservation of plant macro-remains is given as identifiable to family, genus or species. Faunal remains seen in the flots are noted in general terms with only abundance noted. This is not a zooarchaeological report but the presence of terrestrial, freshwater or marine mollusca has been commented on if present.

Identifications were made using uncharred reference material (author's own and the Northern European Seed Reference Collection at the Institute of Archaeology, University College London) and reference manuals (such as Beijerinck 1947; Cappers *et al.* 2006 and 2023; Jacomet 2006). At assessment level full identifications are only made of significant plant macro-remains. Where given the nomenclature for the plant macro-remains follows Stace (Stace 2010). Scientific names are used once and English common names thereafter. English common names are used in the table for clarity.

Quantities were estimated in the following way: -

Codes for abundance, diversity and level of preservation as used in the tables.

Abundance

- 1 = 'Low' = <10
- 2 = 'Moderate' = 10-100
- 3 = 'Abundant' = >100

Diversity

- 1 = 'Low' = <3 taxa types
- 2 = 'Moderate' = 3 to 10 taxa types
- 3 = 'High' = >10 taxa types

Preservation

- 1 = Identifiable to family
- 2 = Identifiable to genus
- 3 = Identifiable to species

Where given the nomenclature for the plant macro-remains follows Stace (Stace 2010). Scientific names are given in the text and English common names used thereafter. Common names are used in the assessment results table for clarity.

Outline of the assemblage

Evidence for bioturbation was observed during microscopic examination. Modern rootlets and terrestrial mollusca were frequent in all flots meaning that aeration of the soil and bioturbation is likely to have occurred. Shells of the subterranean snail *Ceciliodes acicula* (Müller) (Kerney & Cameron 1979) were present in most samples indicating that bioturbation has been taking place.

Desiccated seeds of the ruderal plants orache (*Atriplex* sp.) and black bindweed (*Fallopia convolvulus* L.) were present in the samples. Because these samples also had abundant modern rootlets and terrestrial mollusca in them the desiccated seeds should be interpreted as intrusive.

Charring was the mode of preservation for plant macro-remains in these samples. Charring occurs when plant material is heated under reducing conditions where oxygen is largely excluded leaving a carbon skeleton resistant to decay (Boardman and Jones 1990, 2; Campbell *et al.* 2011, 17). These conditions can occur in a charcoal clamp, the centre of a bonfire or pit or in an oven or when a building burns down with the roof excluding the oxygen from the fire (Reynolds, 1979, 57). No waterlogged or mineralised plant macro-remains were present.

Charred plant remains present were charcoal and cereal grains. The preservation ranged from poor (family level or indeterminate level of identification) to moderate (genus or possible species). Grains of barley

(*Hordeum* sp.) and wheat (*Triticum* sp.) were found in pit 75004, sample <5> Two of the barley grains appeared to be hulled.

Fragments of charcoal of identifiable size were found in pit 29010, samples <6>, <7> and <8> and pit 75004, sample <5>.

Statement of potential and recommendations

The charred plant remains in samples from pit 29010 and pit 75004 have the most potential to provide radiocarbon dates and information about feature use and activities at the Site. The high amount of bioturbation evident in the flots means that the certainty that the charred plant remains are associated with the sampled features is reduced.

It is clear that charred plant remains survive at this Site so if further work is to commence, bulk samples should be taken.

Conclusions and recommendations

The eight samples were dominated by modern rootlet fragments and terrestrial mollusca. The cereal grains in pits 75004 and 29010 could be indicative of the presence of larger assemblages. Without cereal chaff, finer identifications will not be possible.

If charcoal in pits 29010 and 75004 is found to be of a short-lived species, sapwood or a twig, it will be suitable for radiocarbon dating, as could the grains in pit 75004 (Bayliss & Marshall 2022, 37).

The assessment has determined that charred plant macro-remains survive on the Site.

References

- Bayliss, A. and Marshall, P. (2022). *Radiocarbon Dating and Chronological Modelling: Guidelines and Best Practice* (Historic England, London).
<https://historicengland.org.uk/research/methods/archaeology/scientific-dating/>
- Beijerinck, W. (1947). *Zadenatlas der Nederlandsche Flora*. Veenman and Zonen, Wageningen.
- Boardman, S. and Jones, G. (1990). 'Experiments on the Effect of Charring on Cereal plant Components.' in *Journal of Archaeological Science* 17, 1-11.

- Campbell, G., Moffett, L. and Straker, V. (2011). *Environmental Archaeology. A Guide to the Theory and Practice of Methods, from Sampling and Recovery to Post-Excavation. Second Edition*. Portsmouth: English Heritage Centre for Archaeology Guidelines No. 1. <https://www.historicengland.org.uk/images/books/publications/environmental-archaeology-2>.
- Capon, L. (2024) *Land Adjacent to Manor Farm and Weybrook Park Golf Club, Rookery Lane, Monk Sherborne, Tadley, Hampshire: Written Scheme of Investigation for an Archaeological Evaluation*. Unpublished Archive Report for AOC Archaeology Group
- Cappers, R.J.T., Bekker, R.M. and Jans, J.E.A. (2006). *Digital Zadenatlas Van Nederlands - Digital Seeds Atlas of the Netherlands*. Groningen Archaeological Studies Volume 4. Groningen: Barkhius Publishing, Groningen.
- Cappers, R.J.T., Bekker, R.M. and Fennema, D. (2023). *Digital Diaspore Atlas of the Netherlands: Seeds, Fruits and Anthocarps*. Groningen Archaeological Studies Volume 44. Groningen: Barkhuis & Groningnen Institute of Archaeology, Groningen
- Jacomet, S. (2006). *Identification of cereal remains from archaeological sites - second edition*. Basel: Basel University Archaeobotany Lab IPAS.
- Kerney, M.P. and Cameron R.A.D. (1979). *Land Snails of Britain and North-West Europe*. London: Harper Collins Publishers.
- Reynolds, P. (1979). *The Iron Age Farm: The Butser Experiment* London: British Museum Press.
- Stace, C. (2010). *New Flora of the British Isles, 3rd Edition*. Cambridge University Press, Cambridge.

Feature cut no.	Sample	Fill	Feature	Provisional period(s)	Processed Volume (L)	Flot volume (Litres)	CHARRED - Cereal grains			CHARRED - Chaff			CHARRED - Seeds			CHARRED - Miscellaneous			IDENTIFIABLE CHARCOAL			INDETERMINATE CHARCOAL FLECKS			MODERN/INTRUSIVE - Rootlets	MODERN/INTRUSIVE - Poaceae Stem	DESICCATED - Seeds	FAUNA - Terrestrial mollusca			Potential for analysis - Charcoal?	Potential for analysis - General Macros?	Potential for Scientific Dating?	Comments
							abundance	diversity	preservation				abundance	diversity	preservation	abundance	diversity	preservation	abundance	abundance	abundance	abundance	abundance	diversity	preservation	abundance	Yes/No	Yes/No	Yes/No					
20012	1	20011	Terminus	Undated	8	0.01	-	-	-	-	-	-	-	-	-	-	-	-	-	1	3	-	-	-	-	3	No	No	No	FAUNA: mostly <i>Ceciliodes acicula</i>				
20013	2	24014	Linear	Undated	15	0.01	-	-	-	-	-	-	-	-	-	-	-	-	-	1	3	-	1	1	3	2	No	No	No	DES: fat hen (<i>Chenopodium album</i> L.), FAUNA: mostly <i>Ceciliodes acicula</i>				
24014	4	24016	Pit	Undated	16	0.025	-	-	-	-	-	-	-	-	-	-	-	-	-	2	3	-	2	1	3	3	No	No	No	DES: spear-leaved/common orache (<i>Atriplex prostrata/patula</i>) seeds				
29010	6	29014	Pit - lower fill	Undated	7	0.02	-	-	-	-	-	-	-	-	-	-	-	-	1	1	-	-	-	-	-	3	No	No	No	CHD: 1 fragment of identifiable charcoal				
29010	7	29015	Pit - upper fill	Undated	5	0.005	1	1	2	-	-	-	-	-	-	-	-	-	2	1	2	-	1	1	3	3	Yes	No	Yes	CHD: 1 barley (<i>Hordeum</i> sp.) grain, DES: black bindweed (<i>Fallopia convulvulus</i> L.)				
29010	8	29016	Pit - upper fill	Undated	8	0.02	-	-	-	-	-	-	-	-	-	-	-	-	1	2	3	-	-	-	-	-	Yes	No	Yes	CHD: 1 fragment of identifiable charcoal, FAUNA: mostly <i>Ceciliodes acicula</i>)				
75004	5	75005	Pit	Undated	7	0.005	1	1	2	-	-	-	-	-	-	-	-	-	2	-	2	-	-	-	-	2	Yes	No	Yes	CHD: 23 fragments of identifiable charcoal, 10 grains - 8 barley (<i>Hordeum</i> sp., 2 hulled), 2 wheat (<i>Triticum</i> sp.)				
Unknown	3	17006	Unknown	Undated	20	0.075	-	-	-	-	-	-	-	-	-	-	-	-	-	-	1	-	1	1	3	3	No	No	No	DES: spear-leaved/common orache seeds				

Appendix F: OASIS data collection form

OASIS ID (UID)	curaterr1-532689
Project Name	Evaluation at Land Adjacent to Manor Farm, Monk Sherborne
Sitename	Land Adjacent to Manor Farm, Monk Sherborne
Sitecode	24924
Project Identifier(s)	24924
Activity type	Evaluation
Planning Id	23/00411/ENS
Reason For Investigation	Planning: Between application and determination
Organisation Responsible for work	Cura Terrae, Rocket Environmental Services Ltd
Project Dates	25-Mar-2025 - 25-Mar-2025
Location	Land Adjacent to Manor Farm, Monk Sherborne NGR: SU 60821 55166 LL: 51.2923860609655, -1.129137808295746 12 Fig: 460821,155166
Administrative Areas	Country: England County/Local Authority: Hampshire Local Authority District: Basingstoke and Deane Parish: Monk Sherborne
Project Methodology	The evaluation consisted of 83 trial trenches (30m by 1.8m) sited upon anomalies identified in two phases of earlier geophysical survey and visible as cropmarks across the Site.
Project Results	The evaluation identified a landscape of romano-british enclosure, with the majority of excavated features conscribing to boundary or trackway ditches which contained hand-built pottery. A sub-oval enclosure to the south-east of the Site was found to contain assemblages of Roman pottery, alongside hand-built wares. Fragments of roof tile in this area appeared to indicate the presence of a Roman building, but the interior of the enclosure was not evaluated. A coin of Tetricus I and diagnostic pottery forms indicates activity within the mid to late 3rd century, comparable with a Roman building identified in excavations at Manor Farm, at the northern limit of the Site. A possible Bronze Age ring ditch was targeted, but the nature of activity within was unable to be characterised.
Keywords	Round House (Domestic) - LATER PREHISTORIC - FISH Thesaurus of Monument Types Field System - LATE IRON AGE - FISH Thesaurus of Monument Types Building - ROMAN - FISH Thesaurus of Monument Types
Funder	Other utilities or infrastructure company Solar 2 Ltd

HER	Hampshire Archaeology and Historic Buildings Record (AHBR) - unRev - STANDARD
Person Responsible for work	Stuart Ross, Holly Drinkwater, Adam Goodfellow
HER Identifiers	HER Monument No - 36034, HER Monument No - 36031, HER Monument No - 19600, HER Monument No - 36064
Archives	